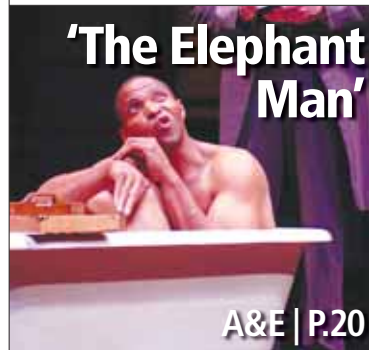


# Mountain View VOICE



JUNE 29, 2007 VOLUME 15, NO. 26

INSIDE: WEEKEND | PAGE 17

650.964.6300

mv-voice.com



NORBERT VON DER GROEBEN

**Jimmy Campbell**, who suffers from a rare neurological disease, is watched over in his parents' San Jose home by nurse Michele Raible on Tuesday. Campbell checked out of El Camino Hospital last week after residing there for five and a half years.

## Patient checks out — five years later

BUREAUCRATIC LOOPHOLE MEANT JIMMY CAMPBELL WOULD BE VULNERABLE IF HE LEFT EL CAMINO HOSPITAL

By Alexa Tondreau

Last Tuesday, on the sixth floor of El Camino Hospital's medical care unit, a small gathering of nursing staff and others came together to celebrate the release of one of the hospital's best known, and longest residing, patients.

After five and a half years as an inpatient at El Camino, Jimmy Campbell finally was able to go home to live with his parents, Jim and Glenna Cecchini.

"It's totally surreal. It's miraculous," said Glenna Cecchini. "We almost couldn't believe it was happening, after what we'd

been through."

If it had been up to the Cecchinis, Jimmy would have come home a long time ago. Instead, they found themselves in a long struggle with a health care system that couldn't accommodate the unique needs of their son.

Jimmy, who is 43 years old, was diagnosed with an extremely rare neurological disease when he was 29. Rapidly, the disease destroyed his motor functions, so that he was confined first to a wheelchair and then a bed.

"He's cognitive. He's a man trapped in his body," Jim said.

By the time he was 38, he had become so incapacitated that his parents were forced to admit him to El Camino, where he came to require 24-hour skilled nursing care, to closely monitor his eating, breathing and especially his swallowing.

A side effect of Jimmy's disease is that he cannot properly swallow, and so his throat needs to be suctioned frequently to prevent him from choking. It is this particular feature of his condition that created a snag for Jimmy to receive full Medi-Cal coverage for at-home, 24-hour care, which costs

► See **PATIENT**, page 10

## Farmlands Group seeks new location

FRANCIA ORCHARD, CUESTA ANNEX ARE CANDIDATES IN SEARCH FOR FARM SITE

By Daniel DeBolt

If the amount of discussion about potential farm sites is any indication, efforts to bring a farm to Mountain View have not lost much steam.

Earlier this month, the City Council voted against zoning the Grant Road farm property for agriculture, ending a long battle to preserve a third of the 15-acre site as a demonstration farm. But afterward the council voted unanimously to study other locations for a farm.

"We know the 7-0 vote could be nothing

► See **FARMLANDS**, page 11



## Will Moffett again house a zeppelin?

By Daniel DeBolt

The glory days of the USS Macon could return to Moffett Field if a Los Gatos company gets its wish.

Last week the company, Airship Ventures, committed to spend-

► See **ZEPPELIN**, page 6

INSIDE

GOINGS ON 23 | MARKETPLACE 29 | MOVIES 21 | REAL ESTATE 35 | VIEWPOINT 15

REDEFINING QUALITY SINCE 1990  
Reading between the emotional line makes the difference between finding a house and a home.

**Margaret Grant**



**MOUNTAIN VIEW** ■ Cuesta Park charmer on internal street. 3bd/1ba with open floor plan, newly painted interior, new fixtures + refinished HW floors. **\$799,000**

**Cheryl Okuno**



**CAMPBELL** ■ Updated 3bd/2ba home, 1400+/- sf. Remodeled kitchen with skylight + remodeled hall bath. Step-down living room with wood burning FP. **\$750,000**

**Marc Roos**



**SAN JOSE** ■ Exceptional 2bd/1.5ba downtown Willow Glen townhome. Many upgrades including Pergo wood floors, dual paned windows, + central A/C. **\$519,000**

**Elaine Klemm**



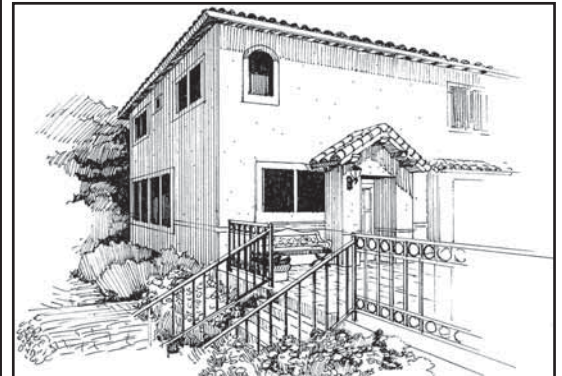
**SUNNYVALE** ■ Located in the highly desired "Birdland" area, this charming 3bd/2ba home has been updated with style. Delightful environment for entertaining. **\$838,000**

**Dorothy Liu**



**CUPERTINO** ■ Spacious, bright 4bd/2.5ba home offers an open floor plan with hardwood floors + chef's kitchen with granite + stainless appliances. **\$988,000**

**Chuck & Tori Atwell**



**MOUNTAIN VIEW** ■ Downtown Mountain View! Gorgeous 2bd/1.5ba end-unit with hardwood floors, high ceilings + granite kitchen. 2-car secured parking. **\$598,000**

**Jim & Jimmy Nappo**



**MOUNTAIN VIEW** ■ 4 bedroom, 2 bath home located on a lot size of approximately 7405 sf. Lush landscaping with separate garden shed. Los Altos High School. **\$919,000**

**Bea Sines**



**SAN JOSE** ■ Exceptionally spacious 6+bd/4+ba home offers an inviting and elegant atmosphere. Office + guest suite. Sumptuous master suite. **\$1,325,000**

**Mary Marley**



**MOUNTAIN VIEW** ■ Downtown Mountain View. Spacious 2bd/2ba TH with vaulted ceilings, hardwood floors, and inside laundry. Large private yard, + garage. **\$615,000**

# Voices

A R O U N D T O W N

Asked in Downtown Mountain View. Pictures and interviews by Melody Dye.

*How are you involved with the arts in your local community?*



*"In San Diego we often went to Balboa Park, to the art fairs and markets with the kids. We just moved here, so I'm hoping to go to some of the children's puppet shows and plays."*

**Devone Rocky with Luke,**  
Mountain View



*"My husband and I love the Stanford Theater and we recently went to see the double-bill featuring 'Bringing Up Baby' and 'The Golden Cadillac.' Phyllis here, my mother-in-law, is a real musician. She's playing accordion in the Brighton, Oregon, Fourth of July parade."*

**Jerry Long,** Sunnyvale,  
with **Phyllis Long,** Redmond, Ore.



*"I'm not involved so much with the community here. But I like to go to the pool and listen to music with all my friends around. We're into Mexican, R&B, hip-hop ... all kinds of music."*

**Carlos Contreras,** Mountain View



*"I play guitar in a rock n' roll band, Prime Cut. It's math rock, jazz fusion I guess. ... We do a lot of weird time signatures and quick change-ups in the music."*

**Maxwell P.,** Sunnyvale



*"I go to the occasional play. I don't think I have a particular aesthetic in mind. ... I also visit art exhibits every so often. The San Jose Museum of Art had a nice reinterpretation of Dante's Inferno a couple months ago with the cantos redone in a modern setting."*

**Bill S.,** San Jose

Have a question for **Voices Around Town?** E-mail it to [editor@mv-voice.com](mailto:editor@mv-voice.com)

YOUR SMILE SAYS A LOT ABOUT YOU. IF YOU LET IT.



**STRAIGHT TEETH ARE WITHIN YOUR REACH... Ask us how!**

**Invisalign Day – July 13, 2007**

Complimentary Consultation with  
David R. Boshken, D.M.D.

~PLUS~

**\$250 Off**

**Invisalign Treatment**

Dr. Boschken is an Elite Provider for Invisalign (top 1% in the world). He has treated over 850 Invisalign patients.



**invisalign**

LEARN HOW TO SMILE AGAIN.



Call today to schedule your  
**FREE Invisalign® Consultation.**

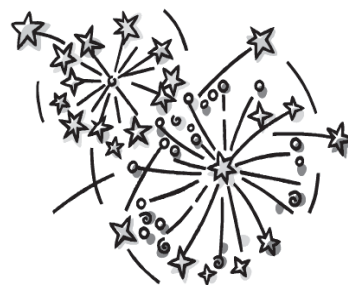
**650-964-2626**

100 W. El Camino Real, Suite 63A  
Mountain View (Corner of El Camino Real and Calderon)

© 2007 Align Technology, Inc. All Rights Reserved

**Shoreline Amphitheatre, Radio Disney and the  
City of Mountain View Present:**

**The San Francisco Symphony Orchestra featuring  
The Best of Broadway**



**Discounted Tickets!**

**Shoreline Amphitheatre**

**Wednesday, July 4**

**Plus a spectacular Fireworks Display**

- ★ Mountain View residents may purchase discounted lawn and upper reserve tickets for \$13.50 (four ticket per family limit). Discounted tickets are courtesy of Shoreline Amphitheatre and the City of Mountain View.
- ★ An additional \$10.00 parking fee will be collected the night of the event.
- ★ Doors open at 5:00 p.m. with the Radio Disney Family Festival.
- ★ Bring this coupon, proof of Mountain View residency (a driver's license and a current utility bill with a Mountain View address) or a Shoreline Resident Ticket ID card to the Amphitheatre Box Office to obtain your free or discounted tickets.
- ★ Box Office hours are Monday - Friday 11:00 a.m. to 2:00 p.m. and Sunday 10:00 a.m. to 2:00 p.m.
- ★ Obtain your tickets up to and including the day of the event.



**Kozy Brothers**  
**De Martini Orchard**

www.demartiniorchard.com  
 66 N. San Antonio Rd., Los Altos

650-948-0881

*Farm Fresh and Always the Best*

*Open Daily 8am - 7pm*

*Effective 6/27/07 thru 7/3/07*

<b>BROCCOLI CROWNS</b> 99¢ LB.	<b>LOCAL - SEASONS PEAK BLEMMEIMS AND PATTERSON</b> <b>APRICOTS</b> 99¢ LB.	<b>LOCAL ZUCCHINI</b> 79¢ LB.
<b>BING CHERRIES</b> \$4.99 LB.	<b>NORTHWEST GROWN LARGE 12 OZ. BSK SWEET</b> <b>BLUEBERRIES</b> \$2.99 BSK.	<b>CALIF. CANTALOUPE</b> 49¢ LB.
<b>SWEET BASIL LOCAL IT IS PESTO TIME</b> 99¢ BUN.	<b>WHITE CORN FRESH DAILY LOCAL GROWN</b> 5 EARS \$2.00 FOR	<b>GRAPES RED OR GREEN CALIF. GROWN</b> \$1.99 LB.
<b>ORGANIC CAULIFLOWER</b> 99¢ EACH	<b>ORGANIC BLUE LAKE BEANS</b> \$1.99 LB.	<b>ORGANIC LOCAL CELERY JUMBO SIZE</b> \$1.49 BUN.
	<b>ORGANIC SWISS CHARD</b> 99¢ BUN.	<b>ORGANIC RED BEETS</b> \$1.49 BUN.

*Your Everyday Farmer's Market*

LocalNews

■ CRIMEWATCH

**PLANT/CULTIVATE MARIJUANA, 800 BLOCK E. EL CAMINO, 6/16**

Neighbors called the police to complain of the strong smell of marijuana coming from the suspects' residence. Investigating offices found nine healthy, growing marijuana plants. The two suspects were arrested and booked on felony charges.

of the cash register, but the man's wallet. The suspect then made off with the wallet in an unknown direction. He is described as a black male with a light complexion, standing about 6 feet 2 inches tall.

**BURGLARY/RESIDENTIAL, 800 BLOCK N. RENGSTORFF AVE., 6/23**

Someone broke into the victim's apartment while he was out of town and stole several items. The victim believes the suspect may be an acquaintance.

**ROBBERY, 600 BLOCK S. RENGSTORFF AVE., 6/23**

A man walked into a 7-11 and pulled a gun on the clerk, demanding not the contents

■ POLICELOG

**ASSAULT WITH A DEADLY WEAPON**

Linda Vista Ave/Terra Bella Ave., 6/21

**GRAND THEFT**

500 Block Showers Dr., 6/20  
 2400 Block Grant Rd., 6/21

**BATTERY**

100 Block E. El Camino Real, 6/19  
 200 Block Mountain View Ave., 6/22  
 2100 Block University Ave., 6/24

**MISSING PERSON - JUVENILE**

100 Block Space Park Way, 6/24

**NARCOTICS POSSESSION**

Bernardo Ave./El Camino Real, 6/24

**BREAKING/REMOVING VEHICLE**

1500 Block Canna Ct., 6/24

**BURGLARY/AUTO**

300 Block Escuela Ave., 6/19  
 1500 Block Charleston Rd., 6/19  
 Century 16 Cinema, 6/24

**BURGLARY/COMMERCIAL**

500 Block Showers Dr., 6/19  
 600 Block National Ave., 6/21

**BURGLARY/RESIDENTIAL**

800 Block N. Rengstorff Ave., 6/23

**DISORDERLY CONDUCT**

Fairchild Dr/Leong Dr., 6/19  
 2200 Block California St., 6/21  
 600 Block W. Evelyn Ave., 6/22  
 200 Block Castro St., 6/22  
 800 Block E. El Camino Real, 6/22  
 Rengstorff Park, 6/22  
 800 Block E. El Camino Real, 6/23  
 200 Block Castro St., 6/24  
 Amphitheatre, 6/24

**DISTURBANCE**

1300 Block Villa St., 6/19

**DOMESTIC DISTURBANCE**

400 Block Ortega Ave., 6/19  
 1300 Block Montecito Ave., 6/20  
 100 Block N. Whisman Rd., 6/21  
 100 Block Evandale Ave., 6/23  
 2000 Block Montecito Ave., 6/23

**DRINKING IN PUBLIC**

600 Block Showers Dr., 6/19

**DRIVING UNDER THE INFLUENCE**

2300 Block W. El Camino Real, 6/19  
 1300 Block Montecito Ave., 6/20  
 200 Block Evandale Ave., 6/23  
 W. El Camino Real/Escuela Ave., 6/23  
 S. of Ellis Ave/SB 101, 6/24  
 100 Block N. Rengstorff Ave., 6/24

**FALSE DMV REGISTRATION**

300 Block N. Whisman Rd., 6/20

**PETTY THEFT**

300 Block Thompson Ave., 6/19  
 3500 Block Truman Ave., 6/19  
 600 Block San Antonio Rd., 6/19  
 Amphitheatre Parkway, 6/20  
 500 Block S. Rengstorff Ave., 6/21  
 2400 Block Grant Rd., 6/21  
 Safeway - N. SLB, 6/22  
 Tropicana Motel, 6/22  
 1800 Block N. Shoreline Blvd., 6/22  
 100 Block La Avenida, 6/22  
 Wal-Mart, 6/22  
 Starbucks - Charleston, 6/23

**POSSESSION OF A CONTROLLED SUBSTANCE**

400 Block W. El Camino Real, 6/20

**POSSESSION OF DRUG PARAPHENALIA**

NB 101/N. Shoreline Blvd., 6/21

**ROBBERY**

600 Block S. Rengstorff Ave., 6/23

**STATUTORY RAPE**

100 Block Fairchild Dr., 6/19

**SUICIDE AND ATTEMPT**

400 Block Del Medio Ave., 6/19

**SUSPICIOUS CIRCUMSTANCES**

200 Block Fay Way, 6/19  
 2500 Block Grant Rd., 6/21  
 100 Block La Avenida, 6/21  
 200 Block Calderon Ave., 6/21  
 N. Rengstorff Ave/San Luis Ave., 6/22  
 500 Block Hans Ave., 6/23

**TERRORIST THREAT**

2400 Block W. El Camino Real, 6/21

**VANDALISM**

1700 Block Rock St., 6/19  
 700 Block Wake Forest Dr., 6/20  
 700 Block Eunice Ave., 6/20  
 3500 Block Truman Ave., 6/21  
 W. Dana St/Hope St., 6/22  
 700 Block W. Middlefield Rd., 6/22  
 500 Block Del Medio Ave., 6/23

Shoreline Amphitheatre, Radio Disney and the  
 City of Mountain View Present:

The San Francisco Symphony Orchestra featuring  
 The Best of Broadway



**Discounted Tickets!**

Shoreline Amphitheatre  
 Wednesday, July 4  
 Plus a spectacular Fireworks Display

- ★ Mountain View residents may purchase discounted lawn and upper reserve tickets for \$13.50 (four ticket per family limit). Discounted tickets are courtesy of Shoreline Amphitheatre and the City of Mountain View.
- ★ An additional \$10.00 parking fee will be collected the night of the event.
- ★ Doors open at 5:00 p.m. with the Radio Disney Family Festival.
- ★ Bring this coupon, proof of Mountain View residency (a driver's license and a current utility bill with a Mountain View address) or a Shoreline Resident Ticket ID card to the Amphitheatre Box Office to obtain your free or discounted tickets.
- ★ Box Office hours are Monday - Friday 11:00 a.m. to 2:00 p.m. and Sunday 10:00 a.m. to 2:00 p.m.
- ★ Obtain your tickets up to and including the day of the event.



## No trouble with Tribble

By Don Frances

**T**WO WEEKS AGO we wrote about Steven Murray, a Mountain View sixth grader whose Lego-constructed robot, Tribble 2.0, would compete in the Robogames competition in San Francisco.

This week, Steven's father Mike wrote in to tell us how he did, and why.

"Tribble 2.0 defeated six other entrants in a single elimination tournament and received a gold medal. Although Tribble 2.0 did not have as much pushing strength as many of its opponents, Tribble 2.0 was faster and more maneuverable. Tribble 2.0 was able to evade its opponents' frontal attacks and push its opponents from behind or from the side. The opponents had few defenses for this style of attack, and Tribble 2.0 prevailed.

Three cheers for Tribble 2.0! For more Robogames results, go to [www.robogames.net/2007.php](http://www.robogames.net/2007.php).

**MOVING OVER** to the right side of the brain, Evy Schiffman of CSMA wrote in to say that the recent Community Arts Day, co-sponsored by CSMA and FIRST 5 Santa Clara County, "was a *huge* (as in 700-plus people attended) success!" That's a big gathering, and shows why CSMA is still the leader of Mountain View's artistic life.

**ALSO:** Carol Berger, who helps run a student exchange program called, weirdly, "IntoEdVentures," would like to announce that there are still several foreign exchange students needing host families in Mountain View.

"We have 21 students left to be placed," she wrote. "We need to have all our students placed by Aug. 1."

Those interested in hosting are asked to call Donna Rodrock at (877) 522-4868.

Don Frances can be reached at [dfrances@mv-voice.com](mailto:dfrances@mv-voice.com).



**SolarCity workers** Ivan Shynhel (left) and Mike Smith secure photovoltaic panels on the roof of Paul McGruder's home on Wasatch Drive.

KELLEY COX

## Power to the people

GROUP CELEBRATES SUCCESSFUL PURCHASE OF SOLAR ARRAYS FOR DOZENS OF MOUNTAIN VIEW HOMES

By Daniel DeBolt

**A**bout 40 homeowners gathered for a Cuesta Park barbecue last Thursday evening to celebrate the success of the Solar Buyers Group, which purchased solar arrays for dozens of Mountain View homes, earning a bulk-rate discount in the bargain.

Within the next few months, a total of 118 Mountain View homes will be harnessing the sun's rays, generating a total of 345 kilowatts of solar energy.

When asked why they went solar, most simply answered that "It seemed like the right thing to do."

Former council member Mike Kasperzak said he had just seen

the climate change documentary "An Inconvenient Truth" before making the decision to get panels for his home.

Residents paid an average of \$15,000 after tax rebates for the panels, and some, like Kasperzak, refinanced their homes to buy them. But SolarCity CEO Lyndon Rive said homeowners start saving money right away, even when they don't buy the panels as part of a group discount.

"It's cash-flow positive" because the savings on electrical bills can outweigh a monthly loan payment on the panels, the 30-year-old Rive said.

Kasperzak said SolarCity had a great business model, and that the company had inadvertently created a political "affin-

ity group." It seems the Solar Buyers Group's e-mail lists are already being used in support of state legislation to allow solar panel users to more effectively sell their unused energy back to PG&E.

The organizer of Solar Buyers Group, Bruce Karney, earned himself a great deal of praise for his efforts — and something extra to boot. Two weeks ago, he landed a job with SolarCity as community programs marketing manager.

"This whole thing was Bruce, which I think is wonderful," said Monta Loma resident Sheri Morrison.

E-mail Daniel DeBolt at [ddebolt@mv-voice.com](mailto:ddebolt@mv-voice.com)

### ■ EDUCATION

## Boundary change's possible fallout

DEMOGRAPHER SAYS HIGH SCHOOL DISTRICT MAY NEED TO RETHINK ITS OWN BOUNDARIES

By Alexa Tondreau

**W**ith the decision for Los Altos School District boundary changes now final, the district's hired demographer, Jeanne Gobalet, said she thinks the Mountain View-Los Altos High School District might have to follow suit and make changes of its own.

It's an idea to which MVLA Superintendent Barry Groves remains noncommittal, saying there are no current plans to alter district boundaries for Mountain View and Los Altos high schools.

"I'm going to look at the [LASD] boundaries and see what they've done. I'll look at the numbers and see if anything needs to happen," he said, adding that "possibly nothing needs to happen."

In a 3-2 vote last week, the Los Altos School District board moved to accept Scenario 2.3, which makes changes to boundary lines for Bullis, Almond, Santa Rita, Covington and Springer elementary schools.

Gobalet reasons that as a result of those changes, the junior high

► See **BOUNDARIES**, page 13

## Boy, 17, narrowly escapes rival gang members

By Melody Dye

**A** 17-year-old was attacked and chased through a local neighborhood last Thursday by gun- and knife-wielding men thought to be part of the Sureños street gang, police said.

Police described the incident as follows:

The victim was riding his bike

at the corner of Linda Vista and Terra Bella avenues when he noticed two men staring at him as they drove alongside in a white Honda Accord. As he passed them, the driver accelerated, veering toward him in an attempt to run him down.

The victim jumped his bike onto the pavement and began biking faster. When he looked

back, the passenger was aiming a gun at him out the window and both men were flashing the Sureño gang sign with their hands.

The men followed the boy into the parking lot of a local business, where they exited the vehicle and ran towards him, the driver brandishing a knife. The driver swung at him, nar-

rowly missing. The victim then dropped his bike and began to flee, cutting through local backyards and jumping fences as the two suspects raced after him on foot.

Eventually the victim reached Terra Bella Academy, where he sought help from an adult and called the police.

The victim, who identifies himself as a Norteño, said he did not know either of his pursuers and could not identify them. ■

IF IT'S NOT IN THIS VAULT, IT'S NOT SAFE.

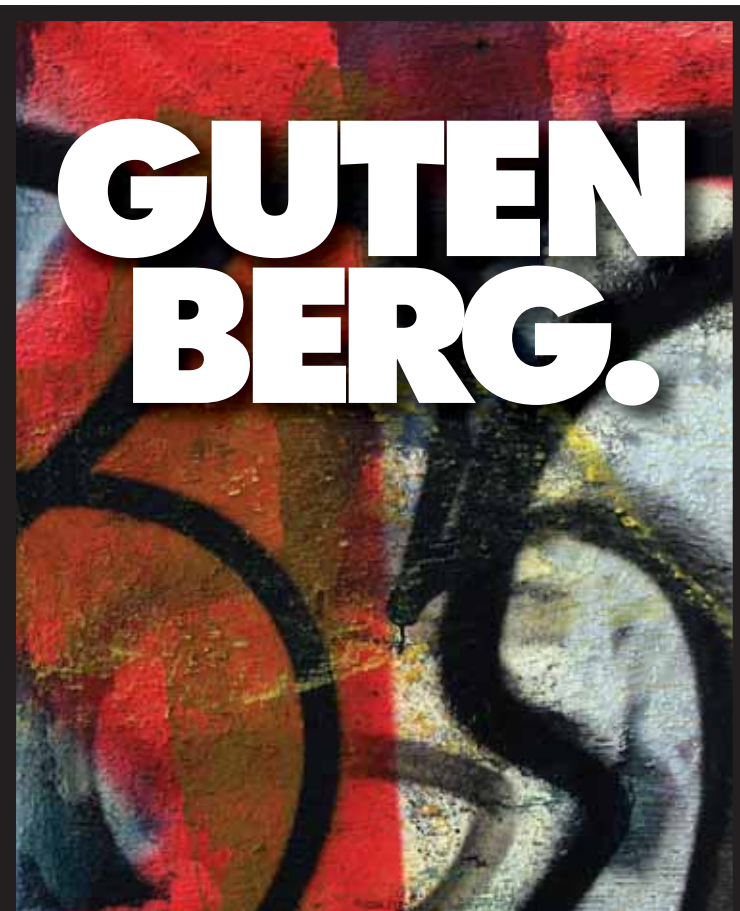


## LOS ALTOS VAULT & SAFE DEPOSIT CO.

A private depository  
Safe deposit boxes of all sizes  
Strict and total confidentiality  
Secured and ample parking  
For your own sake we should have your business.  
Visit our facilities and judge for yourself.  
Data bank for important and confidential records.



121 First Street, Los Altos, CA 94022  
Tel: 650-949-5891 www.losaltosvault.com



## GUTENBERG. APPLE. ADOBE.

We need a full-time **Graphic Designer** who understands the connection.

Someone who possesses strong editorial and advertising design skills.

You should have the ability and demonstrated experience to work with the latest publishing software - Indesign, Photoshop and Illustrator.

**Experience in print work and/or newspapers is preferable.**

*The* **Almanac**

For immediate consideration send your resume to

Raul Perez, Design Director  
rperez@almanacnews.com

We offer a competitive compensation & benefits package including medical, dental, paid vacations, sick time, and a 401(k) plan.

■ SEEN AROUND TOWN

## Hummingbird family



**Brigitte Fleeman** of Front Lane sent in this shot of a busy mother hummingbird in mid-flight — behind which, partially hidden in the branches, can be seen her down-lined nest with a tiny baby hummingbird peeking out.

"The nest is about the size of an espresso cup," Fleeman wrote, "and was ... ideally located for viewing and picture-taking from inside my living room." Fleeman and her husband Gary named the baby hummingbird "Hummy," and followed its progress over several days.

"Hummy stayed in the nest till the morning of June 3 (around 22 days of age). The little featherless baby developed within into weeks into a beautiful little hummingbird."

If you have a photo taken around town which you'd like published in the Voice, please send it (as a jpg attachment) to editor@mv-voice.com.

## ZEPPELIN

► Continued from page 1

ing \$12 million on a 264-foot Zeppelin NT07 airship, which would provide bird's-eye tours of the Bay Area. Various media outlets claimed that the semi-rigid airship would be housed at Moffett Field, but on Tuesday the company made it clear that it would only be housed there for occasional maintenance if NASA gives the green light.

Furthermore, it probably wouldn't be housed in the Macon's old home, Hangar One, since that structure was found to be toxic and needs to be either cleaned up or demolished. So the company is considering use of one of the smaller hangars at Moffett.

"It would be our dream to be in Hangar One, but we understand all the issues surrounding it," said Alex Hall, Airship Ventures' CEO and a member of the Moffett Field Historical Society. She added that "It would be ridiculous to bring a rigid airship to the Bay Area and not have any association with Moffett Field. People would think our heads aren't screwed on right."

Nonetheless, the airship would probably be stationed closer to San Francisco, Hall said, and it won't need an airport. Because the mooring mast is attached to a large truck, any suitable piece of open space would do.

Made by the same company that built the famous Hindenburg, the 12-passenger, 264-foot airship is one third the size of the USS Macon, but four times longer than the 59-foot Good Year blimp.

Hall said the Bay Area is one of the best places in the world to fly an airship. The NT07 can fly in up to 30 knots of wind, and Hall expects at least 150 perfect flying days a year.

The company is looking for investors to help fund the \$12 million airship. But once in operation, a sizeable amount of income is expected from advertisements on its side. Ticket prices have yet to be announced.

Hangar One could soon be demolished as the Navy decides how deal with the toxic PCBs in its siding. A decision on its fate is expected later this year. ▀

E-mail Daniel DeBolt at ddebolt@mv-voice.com

■ FUN FACTS ABOUT AIRSHIPS

**Hindenburg's successor:** The Bay Area airship is under construction by Zeppelin, which also manufactured the Hindenburg airship that exploded into flames in 1937. This one is filled with helium instead of hydrogen, however, and the company says there's no danger of it catching fire.

**In the sky with diamonds:** In Africa the diamond company DeBeers is using one of four Zeppelin NT07 airships in existence to "gravity survey" for diamonds in Botswana. One airship can reportedly do the work of 50 ground crews searching for diamond minefields.

**Environmentally friendly:** In flight, the Zeppelin NT07 uses about as much fuel as many planes do while idling on the runway.

**Airships rock:** The staircase on the Graf Zeppelin airship was called the "himmelsteppe," which translates to "stairway to heaven." It's probably just a coincidence that the 1970s rock hit by Led Zeppelin has the same title.



KELLEY COX

**Firefighters** battle a 15-acre grass fire near "The Dish," a grassy open area west of the Stanford University main campus.

## Stanford foothills scorched

COMMUTERS IN GRIDLOCK AS FIREFIGHTERS WORKED TO EXTINGUISH 128-ACRE BLAZE

*Palo Alto Weekly*

A blackened Stanford Dish hiking trail was closed Tuesday following a blaze that consumed 128 acres of the foothills between Highway 280 and Junipero Serra Boulevard on Monday afternoon and evening.

The fire threatened structures in the area of Old Page Mill and Page Mill roads and prompted a voluntary evacuation of homes, but no structures were damaged and no injuries to residents or firefighters were reported.

Police believe the fire was most likely caused by human activity, and are investigating whether it was started accidentally or intentionally. Investigators found that a water generator, which they originally thought caused the fire, was unplugged.

Firefighters from units as far south as Gilroy and aerial support from the California Department of Forestry and Fire Protection (Cal Fire) responded to the conflagration, which broke out at around 4 p.m. Cal Fire first received word at 4:13 p.m.

Smoke from the fire could be seen from many miles away. In Mountain View, great plumes of smoke blotted out much of the sky to the northwest.

The fire was fully contained by 7:30 p.m. Monday evening, according to Palo Alto police and fire communication manager Charlie Cullen.

Hao Thai, a science and engineering associate at Stanford University, was inside the university's Wilcox Solar Observa-

tory on Reservoir Road when the wind started blowing the fire south towards the observatory. He noticed smoke dimming the sunlight as he took magnetic field measurements of the sun.

Then he began to hear sirens, and firefighters arrived. The flames hit the 15-foot fire break surrounding his building and went around, he said. Firefighters told Thai to "hunker down" and stay inside.

"They knew what they were doing, so I didn't worry too much," he said, while adding that it was nonetheless a scary experience.

On Tuesday, joggers and hikers streamed to Dish trailhead at Stanford Avenue and Junipero Serra, hopeful of taking a morning walk and viewing the fire damage. However, they were turned away. An officer from the Stanford Department of Public Safety said that hot spots could still ignite up to 48 hours following a blaze.

Firefighters remained in the area, but all nearby streets were open.

The incident area is called the Junipero Serra/Frenchman's area and includes the foothills north of Page Mill Road, east of Highway 280 and west of Junipero Serra. The blaze consumed coyote brush and oak trees, officials said.

California has declared fire season early this year, according to Palo Alto Fire Department spokesperson Barbara Cimino.

"This is going to be a tough fire season for all of California," she said.

When it rains,  
it doesn't always pour...

Yes, we've had some rain this year, but we're still far below normal levels. That's why conserving water is the wise choice for people who care about the environment and one of our most precious natural resources.

**Call for a FREE Water-Wise House Call!**

We'll visit your home to diagnose your water use and prescribe customized tips to save you money.

And you won't have to wait around all day... we'll schedule a **specific time** for your visit!

Santa Clara Valley  
Water District

Call **1-800-548-1882** or click [www.valleywater.org](http://www.valleywater.org) today!

# Inspirations

## A Guide to the Spiritual Community

*Family, Friends, Faith*  
It's what's important.  
It's who we are.

**First Presbyterian Church**  
*mountain view*  
"Come and have your Faith lifted!"

**SUNDAY:**  
Sunday School 9am  
Worship 10:30 am

First Presbyterian  
1667 Miramonte Ave.  
(650) 968-4473  
[www.fpcmv.org](http://www.fpcmv.org)

**MOUNTAIN VIEW CENTRAL**  
**SEVENTH-DAY ADVENTIST**

Saturday Services, Worship 11:00 am  
Sabbath School, 10 am

Wednesday Study Groups, 10:00 am & 7:00 pm  
1425 Springer Rd., Mtn. View Office Hours 9-1, M-Fri  
650-967-2189

To include your Church  
in **Inspirations**

Please call Blanca Yoc  
at 650-326-8210 ext. 221  
or e-mail [byoc@paweekly.com](mailto:byoc@paweekly.com)

**Los Altos Union Presbyterian Church**

858 University Avenue 650.948-4361  
[WWW.UNIONPC.ORG](http://WWW.UNIONPC.ORG)  
Turn East on University  
off El Monte Ave.  
between I-280 and Foothill Expwy

*Sunday Schedule: 3 Worship Times!*  
8:00 am Breakfast@Union #1 Worship  
9:30am Breakfast@Union #2 Worship  
9:45 am Church School Nursery  
11:00 am Worship in the Sanctuary,  
Club Sunday for Children, Nursery

**Los Altos Lutheran Church**  
ELCA

**Pastor David K. Bonde**  
**Outreach Pastor Gary Berkland**  
9:00 am Worship  
10:30 am Education  
Nursery Care Provided  
Alpha Courses  
650-948-3012  
460 S. El Monte Ave., Los Altos  
[www.losaltoslutheran.org](http://www.losaltoslutheran.org)

NEWS BRIEFS

**KASPERZAK DECIDES AGAINST ASSEMBLY RUN**

Former City Council member Mike Kasperzak has decided not to run for Sally Lieber's state Assembly seat in 2008, after announcing in December that he was forming a committee to explore the idea.

Instead, Kasperzak said he would be supporting Santa Clara council member Dominic Caserta, a Democrat and high school teacher. Kasperzak said Caserta would be able to "bring people together to get things done."

While he figures out his next move, Kasperzak has been doing political consulting work, remodeling his house and involving himself in several local issues, such as the effort to bring a neighborhood farm back to Mountain View.

— Daniel DeBolt

**LOCAL MAN INJURED IN CRASH ON 280**

Two people, including a Mountain View man, were injured after a car crash off Highway 280 in Palo Alto late Monday afternoon.

Salvador Rosales of Mountain View was listed in good condition Tuesday at Stanford Hospital. He was driving a red Toyota when it attempted to exit southbound Highway 280 at Page Mill Road at 5 p.m. and left the roadway, crashing into a tree.

Initial reports said one person had suffered a serious head injury. The California Highway Patrol did not have any information on the second person injured in the crash.

— Palo Alto Weekly

COMMUNITY BRIEF

**GREENBELT ALLIANCE HOLDS 'URBAN OUTING'**

This Saturday, the Greenbelt Alliance is hosting a workshop and "urban outing" in downtown Mountain View to foster interest in its guiding ideals of quality of life and "smart growth."

Greenbelt Alliance is a nonprofit that has worked since 1958 to protect open spaces and promote livable communities throughout the Bay Area. The upcoming workshop will focus on creating dynamic new neighborhoods in the South Bay, and will explore the potential of "smart growth" and development.

The free workshop starts at noon at King of Krung Siam Restaurant, at the intersection of Castro and Villa streets, and winds its way through the city streets over the course of the afternoon, wrapping up around 4 p.m.

For more information or to RSVP, call Marla Wilson at (415) 543-6771 or visit [www.greenbelt.org](http://www.greenbelt.org).



**See what you've been missing. Miss what you've been seeing.**

With our new TruScene™ insect screen, the view from your windows stays as clear as all outdoors. Virtually invisible and totally innovative, TruScene insect screens give you beautifully unobstructed views. They let more sunlight into your home, yet keep even the smallest insects out. TruScene insect screens from Andersen — they're like nothing you've ever seen.



[andersenwindows.com](http://andersenwindows.com)



**Bruce Bauer Lumber & Supply**  
134 San Antonio Circle, Mountain View, CA 94040  
(650) 948-1089 • [www.brucebauer.com](http://www.brucebauer.com)

Mon-Fri 7:30am-5:00pm  
Sat 8:00am-4:30pm • Sun 9:00am-4:30pm

Discover the difference TruScene™ insect screens can make. Visit our showroom today.

© 2006 Andersen Corporation. All rights reserved.

Community Wellness Lecture Series

Presented by the Health Library & Resource Center — A PlaneTree Affiliate

Wednesday, July 11 ▶ 7–8 pm

**Maximizing Your Memory**  
**Alexandra Morris, Family Services Manager,**  
**Alzheimer's Association**

El Camino Hospital, back of cafeteria  
2500 Grant Road, Mountain View

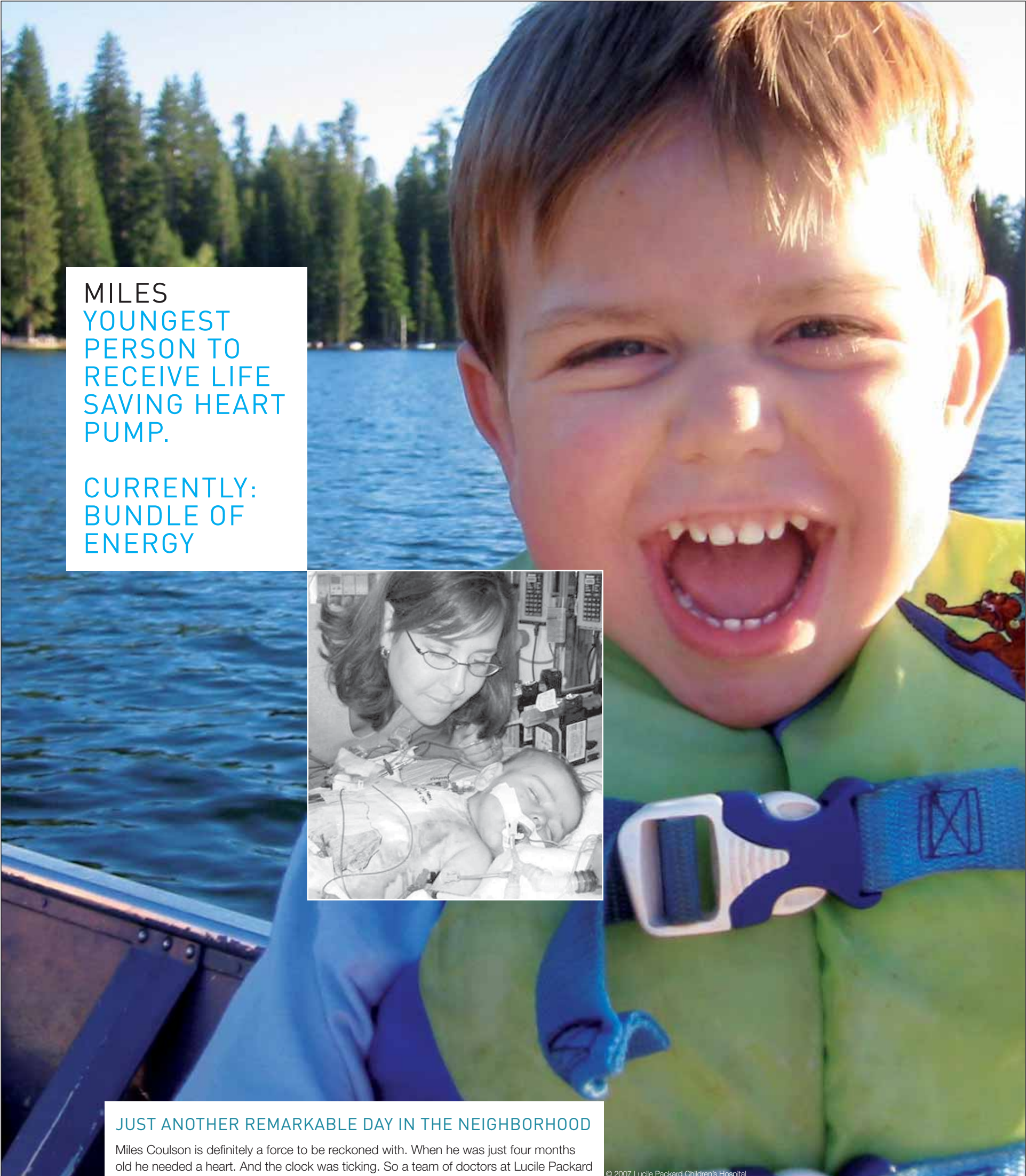
To register and for more information  
call **(800) 216-5556**



the right care. right here.

2500 Grant Road, Mountain View, CA 94040 | [www.elcaminohospital.org](http://www.elcaminohospital.org)





MILES  
YOUNGEST  
PERSON TO  
RECEIVE LIFE  
SAVING HEART  
PUMP.

CURRENTLY:  
BUNDLE OF  
ENERGY



#### JUST ANOTHER REMARKABLE DAY IN THE NEIGHBORHOOD

Miles Coulson is definitely a force to be reckoned with. When he was just four months old he needed a heart. And the clock was ticking. So a team of doctors at Lucile Packard Children's Hospital came up with a bold plan – use a Berlin Heart, an artificial pump, until a transplant could be found. That the device had only been used a few times in the U.S. didn't daunt them. They developed a protocol just for Miles. It was more than successful, it was groundbreaking for other pediatric heart patients. It's this kind of innovative thinking, combined with sensitive, nurturing care, that makes Packard Children's a world-class hospital and Miles a world-class bundle of energy. Visit [www.lpch.org](http://www.lpch.org) for more information.

© 2007 Lucile Packard Children's Hospital



**PATIENT**

► Continued from page 1

about \$250,000 a year.

On a technicality, officials in the Department of Health Services did not qualify the procedure as a medical treatment, and so would not give the Cecchinis the full amount of coverage they needed. Instead they offered \$75,000 a year.

In turn, Jimmy's doctor would not discharge him from the hospital until he had adequate care, a position the Cecchinis respect because the doctor's opinion was that he

would have died if he had been assigned to a nursing home.

"Jimmy's doctor was just a godsend," said Jim Cecchini, who is Jimmy's stepfather. "He really protected Jimmy in that hospital, and it wasn't as if he was keeping Jimmy against his will."

In fact, the Cecchinis say the hospital administration repeatedly tried in the first couple of years to discharge him, even offering the family \$30,000 to take him home. But the Cecchinis and their doctor adamantly would not back down, and after a few years the hospital came to accept their

longest-standing patient.

"I think Jimmy's purpose was to teach the hospital compassion," Glenna said. "I know he was the topic of many ethical discussions there."

Jimmy formed a tight bond with the sixth-floor nursing staff, and the Cecchinis say he was visibly saddened to say good-bye to them Tuesday.

"We got to know him as part of the family. He was like a son or a brother," said Shirley Paras, a nurse at the hospital who worked with him the entire five years. Paras said the longest she sees patients remain in the hospital is normally three months.

Jimmy greeted everyone with a huge smile, Paras said.

"We are going to have to get used to him not being here. Already people are saying, 'Oh my gosh, Jimmy's gone,'" Paras said, adding that "it was time for him to go home."

The road home began in earnest about 14 months ago, when the Cecchinis, feeling they were at the end of their rope, placed a call to Assemblywoman Sally Lieber, who represented Jimmy because he had in effect become a resident of Mountain View (the Cecchinis live in San Jose).

The Cecchinis, in Superior Court with the help of advocacy lawyers, had tried in vain to appeal an

administrative law decision which denied Jimmy the DHS services he needed. Finally they contacted their local assembly office for assistance and were referred to Sally Lieber's office, since Jimmy had been residing in Mountain View for the past five years.

Enter Lieber, who the Cecchinis credit with doggedly pursuing the issue in the state legislature and understanding, from the beginning, that "the system had to be changed from within," Jim said.

"Sally was very receptive and a good listener. Her office stayed in communication with us and we never had to call them to keep the ball going. She really would not take 'no' for an answer," Glenna said.

"We obviously wanted to help in whatever way we could" Lieber said. "We love cracking tough cases."

Things started moving rapidly. Lieber wrote a letter to the secretary of health services explaining the situation, and arranged a meeting with the governor's top aide and officials from the department of health services.

Assembly members Joe Coto and Rebecca Cohn also stood behind Jimmy, and co-signed letters to DHS on his behalf to help resolve the issue.

Several days before Christmas in 2006, word came through to Lieber's office: The state had amended the

waiver to allow patients like Jimmy Campbell to receive full coverage. Lieber's office was told by DHS that as many as 300 people in California might be eligible to receive at-home care under this waiver.

"It's inspiring because even though Jimmy is paralyzed, he impacted the lives of so many people. His struggle is heroic," Lieber said, citing the case as the most meaningful in her political career.

For the Cecchinis, Lieber's help was instrumental.

"She honestly restores your faith in government," Jim said.

Jimmy was able to come home last Tuesday, visiting with his brother, nephews and parents outside of the hospital for the first time in five years.

"He gives a thousand-watt smile every day," Glenna said. "He seems animated and happy."

The Cecchinis say it was the hard work of many people — including Jimmy's doctor, their advocacy lawyers and Lieber and her team — that brought him home.

"If anybody had given up, it wouldn't have happened for Jimmy. We needed them all," Glenna said.

"Jimmy's name is now synonymous with not giving up," Jim said. ■

E-mail Alexa Tondreau at [atondreau@mv-voice.com](mailto:atondreau@mv-voice.com)

**NOW ACCEPTING APPLICATIONS FOR FALL 2007!**

**Gan Ami Early Childhood Education Program in collaboration with ALSJCC**

Gan Ami is a nurturing, play-based program with a deep, joyous commitment to Reform Judaism.

Program includes:

- ✧ Parent-and-me program for toddlers
- ✧ Drop-off program for 2 and 3 year olds

For more information or to download an application form, go to <http://www.betham.org/youth/ganami.html>



**Congregation Beth Am**  
**2790 Arastradero Road**  
**Los Altos Hills, CA 94022**  
**650.493.4661**

Gan Ami is partly funded by the Jewish Community Endowment Fund of the Jewish Community Federation of San Francisco, the Peninsula, Marin and Sonoma Counties.

98% customer satisfaction

Now that's music to our ears.

The harmonious lifestyle at BridgePoint at Los Altos senior living community has residents singing our praises. Without blowing our own horn too much, we suspect that our one-of-a-kind approach to wellness activities, programs and education, plays a huge part in that 98% approval. Check out our website or come see for yourself.

**At 98% approval, we're just tuning up for 100%.**

*BridgePoint*  
 AT LOS ALTOS

Independent Living & Assisted Living

1174 Los Altos Avenue • Los Altos, CA 94022

(650) 948-7337



Lic # 435200989 • [www.kiscoseniorliving.com](http://www.kiscoseniorliving.com)



**You're invited to a "Swing into Summer Social" at BridgePoint at Los Altos Thursday, June 28th, from 2 - 4 p.m. • Enjoy music, Mai Tai's, hors d'oeuvres, and more!**

**FARMLANDS**

► Continued from page 1

but a public relations gesture,” said Vick Moore, a founding member of the Mountain View Farmlands Group. “Our concern is that [city] planning staff is very busy. The question is, how do we continue our momentum on this?”

Meanwhile, former council member Mike Kasperzak said last week that he wanted to form a coalition to pass a bond measure so the city could buy the Francia family orchard, located on Whisman Road, and lease it to the Farmlands Group. Such a coalition could include Save Open Space, which fought to keep the Annex open, and the Monta Loma Neighborhood Association, which has called for more parks in the northern part of the city.

The Farmlands Group said the Francia orchard is one of two possible farm sites being considered. The other is the Cuesta Annex, which has the advantage of already being city property.

But the Annex has its own challenges. One is that it was designated to remain open space after a long public planning process last year. Also, the Santa Clara Valley Water District is pursuing use of part of the Annex for a flood basin. (See story on page 14.) This could lead to a confluence of purposes, with the farm located directly in the flood basin — or not.

“A farm in a flood basin is a good idea actually,” said Farmlands Group member Chris Hildebrand last week. The group had even talked with the water district previously about using the Grant Road farm property for a flood basin, before housing there became a certainty.

But open space advocates are likely to balk at the plan for a farm at the Annex, Kasperzak said.

“It’s not going to happen,” he said. “A planning process is a planning process. A farm is not in the cards.”

On the other hand, Kasperzak said, the council has made it clear

that the nine-acre Francia property is not a good location for housing development. The Francia family has not aggressively pursued development of the land, and any opportunity to develop housing

As agricultural land, the value of the Francia property could be less than \$50,000 per acre, compared with several million per acre if it were zoned for residential use. So far the family doesn’t seem in a hurry to sell.

Passing the bond measure to buy the land could prove difficult, requiring a two-thirds vote to pass.

Hildebrand, who has worked towards establishing a permanent farm in Mountain View for seven years, isn’t deterred.

“We would definitely be on board,” she said. “We are ready to do whatever it takes to make this farm happen.”

City manager Kevin Duggan said there would a council study session on possible farm sites after the summer recess, which extends through August. ▀

**“We would definitely be on board. “We are ready to do whatever it takes to make this farm happen.”**

CHRIS HILDEBRAND

may already be gone, he said.

Unlike the Grant Road farm property, the Francia land is not pre-zoned for housing. It also remains in the Williamson Act, an agricultural tax break which takes 10 years to opt out of without facing stiff penalties.

E-mail Daniel DeBolt at [ddebolt@mv-voice.com](mailto:ddebolt@mv-voice.com)



ROBERT L. CULVER D.C., D.A.C.N.B.

**Dr. Culver has recently opened a new facility in Mountain View where he provides natural healing processes utilizing modern chiropractic neurology and new biomechanical techniques that produce lasting results.**

- Recent recipient of America’s Top Chiropractors Award
- Over 40 years in practice
- Board Certified Chiropractic Neurologist
- Applied Kinesiologist
- Pettibon Practitioner
- Certified in Neuro Emotional Technique
- Chiropractic Sports Physician
- Spinal Decompression
- Nutrition



**CULVER CHIROPRACTIC**  
THE NEW CHIROPRACTIC

480 San Antonio Road  
Mountain View, CA  
650.559.7500

CHIROPRACTIC / REHABILITATION REINVENTED

DR. CULVER’S  
CASE STUDY OF THE WEEK

**Bulging Disc**

*“My back and leg are killing me. Every time I try to lift a roll of carpet, it feels as though someone is driving a dagger into my hip and pouring hot lead down my leg.”*

Ernie was a carpet installer, and years of lifting and working bent-over had taken their toll. His MRI’s revealed massive disc and joint degeneration. The surgeons he consulted were not optimistic about the outcome of surgery, given the extent of damage to the discs of L4 and L5 that had protruded and were pressing against the nerves causing his pain.

This was clearly a case for Spinal Decompression, a method of reducing the pressure on the disc, reducing the bulge and allowing the nerves to heal.

The outcome? Ernie was able to return to his work with zero pain. He lifts and installs carpet, water skis, surfs, and feels

**“Fabulous!”**

Call to schedule a no-charge consultation. Feel free to bring any MRI’s, X-rays or lab studies you may have. Please mention MV-10.

1793  
**Bonhams & BUTTERFIELDS**

AUCTIONEERS & APPRAISERS

**Fine Oriental Rugs and Carpets**  
Tuesday July 17, 1pm  
Los Angeles and San Francisco

**Preview**

July 6-8, San Francisco  
July 13-15, Los Angeles

**Inquiries**

Hadji Rahimpour  
+1 (415) 503 3392  
[hadji.rahimpour@bonhams.com](mailto:hadji.rahimpour@bonhams.com)

**Illustrated Catalog:**

\$35 plus S&H  
For further information, complimentary auction estimates or to view and order catalogs, visit [www.bonhams.com/us](http://www.bonhams.com/us) or call +1 (800) 223 2854

An Oushak carpet  
West Anatolia  
size approximately 10ft x 14ft 3in  
Estimate: \$22,000 - 25,000



**Bonhams & Butterfields**

220 San Bruno Avenue  
San Francisco, CA 94103  
+1 (415) 861 7500  
+1 (415) 861 8951 fax  
7601 Sunset Boulevard  
Los Angeles, CA 90046  
+1 (323) 850 7500  
+1 (323) 850 5843 fax  
[www.bonhams.com/us](http://www.bonhams.com/us)

© 2007, Bonhams & Butterfields Auctioneers Corp. All rights reserved. Bond No. 57B5BB23253

**CELEBRATE INDEPENDENCE DAY, NATURALLY!**



Organic hot dogs, picnic supplies, cold beer or root beer floats. Come to **Elephant Pharm** to find everything you need to celebrate Independence Day.

**WE’RE OPEN 4TH OF JULY!**  
Store Hours: 9am-6pm  
Rx Hours: 11am-4pm

**SAVE \$1**

**TERRA CHIPS STRIPES & BLUES**

All-American, naturally red, white and blue potato & vegetable chips. Full of flavor!  
Reg. \$4.49 · **Now \$3.49**  
Prices good through July 11, while supplies last.

**SAVE \$5**

**PICNIC TIME TURISMO DAYPACK**

Comfy backpack straps and insulated compartments make for foolproof picnicking!  
Reg. \$34.99 · **Now \$29.99**  
Prices good through July 11, while supplies last.

**Elephant Pharm**—The Drug Store That Prescribes Yoga  
4470 El Camino Real near San Antonio Road in Los Altos | 650.472.6800

**Pedal Power**  
RIDING REALLY FAST 0.00 0/10  
RIDING KINDA FAST 0.00 0/10  
RIDING SLOW 0.00 0/10

**mikes bikes**

(650) 858-7700  
3001 El Camino Real in Palo Alto  
[www.MikesBikes.com](http://www.MikesBikes.com)



# Begin Your Future Today

It has been called “the greatest entry-level job in California” —and for good reason. Our officers earn a great salary, and a retirement package you just can’t find in private industry. We even pay you to attend our academy. There has never been a better time to join. We’re the largest law enforcement agency in California, and we’re growing. So apply today, and discover why thousands of men and women are proud to wear our uniform.

**[cdcr.ca.gov/jobs](http://cdcr.ca.gov/jobs)**  
**1-866-232-JOBS**



Peace Officers must be a U.S. Citizen (or applied); possess a HS Diploma/GED; be in good physical condition; and have no felony convictions. Must be at least 21 yrs old to apply; no age limit. Veterans receive hiring preference points.

**BOUNDARIES**

► Continued from page 5

schools in the Los Altos School District, Egan and Blach, may not feed into the high schools in a balanced way.

The Byzantine structure guiding the districts' "student streaming" is a complicated one at best, but Gobalet says it comes down to too many students going to Mountain View High School.

About one third of students in the Los Altos High School District go to Mountain View High School, and nearly all of the students in the Mountain View Whisman School District go to Mountain View High as well.

"Mountain View High School has more students, and they need to remedy that," Gobalet said.

Traditionally, Covington Elementary went to Los Altos High School. Now, being split between the two junior high schools, it will also be split between the high schools.

Adding to that, the MVLA district also regularly accepts intra-district transfers, and in recent years has seen a majority of students asking to be transferred to Mountain View. This year alone, the district had to deny 30 students a transfer to Mountain View, a first in the district's history. It accepted about 30.

"It seems to be the more popular school, for some reason," Gobalet said.

Gobalet admits the interplay between the districts, enrollment counts and boundary lines make for a complicated situation, and thinks the next best step is to ensure open communication at the high school and elementary level. Recently she e-mailed the high school district a map of Scenario 2.3, and said she will be available to answer their questions and provide advice.

"The two districts need to work together," Gobalet said. She still thinks there are ways to make the attendance area for Los Altos High School better, in order to ensure overcrowding doesn't occur at Mountain View High, and that Los Altos High gets a more even draw of students.

"I think there's potential for improvement," she said. She couldn't offer specifics, saying she would need information from MVLA on the geographic distribution of students to generate ideas.

Groves did say that if the high school was to make any boundary adjustments, protocol would have the district follow the same process as LASD went through.

"There would be significant time for public input," Groves said. ■

E-mail Alexa Tondreau at [atondreau@mv-voice.com](mailto:atondreau@mv-voice.com)

# BOWMAN

## INTERNATIONAL SCHOOL



**The Bowman program builds confidence, creativity and academic excellence.**



• Lower School - Grades K - 5



• Middle School - Grades 6 - 8



• Individualized, self-directed program

• Rich international and cultural studies

• Proven, Montessori approach

• State-of-the-art facility

• Low student-teacher ratio

[www.bowmanschool.org](http://www.bowmanschool.org)

4000 Terman Drive • Palo Alto, CA • Tel: 650-813-9131



Pacific National Bank

### The deal just got better!

A limited time only special rate for your Home Equity Line of Credit\*

**5.99%** Intro APR\*  
Fixed for 12 months

And thereafter, 0.75% under prime for the life of the loan currently at

**7.50%** Home Equity Line of Credit

One time Offer ends 7/31/07!

**NO** application fee

**NO** closing costs

**NO** annual fee

**NO** appraisal

**PLUS** receive a FREE gift of your choice!\*\*



For a limited time, apply today at  
**(877) PNB-4082**  
or stop in your favorite neighborhood location

#### Mountain View

820 East El Camino Real  
Mountain View, CA 94040  
(650) 964-0640

#### Menlo Park

701 Santa Cruz Avenue  
Menlo Park, CA 94025  
(650) 322-8494

#### Burlingame

1423 Burlingame Avenue  
Burlingame, CA 94010  
(650) 348-8411



\*Annual Percentage Rate (APR) is based on the Prime Rate published in The Wall Street Journal. APR is subject to change monthly. For lines of credit with a maximum combined loan to value of 80% or less, the rate will be prime minus .75%. For lines of credit with a maximum combined loan to value of 80.1% to 90%, the rate will be prime plus .25%. As of June 13, 2007, the Prime Rate is 8.25% and the following rates would apply: 7.50% APR for credit lines of 80% or less maximum combined loan to value and 8.50% APR for credit lines 80.1% to 90% maximum combined loan to value. The maximum APR is 18%. The minimum line amount is \$5,000. There is no annual fee. An early termination charge of \$495 is assessed if paid off and closed within 24 months of loan date. Subject to credit approval and property valuation. Program terms and conditions are subject to change any time without notice. Property insurance is required and flood insurance may be required. Available to owner occupied 1-4 family residential or condominium properties. Offer is for new HELOC customers of Pacific National Bank.

\*\*We reserve the right to substitute a gift of equal or greater value. Limit one free gift per household. Free gift offer may be withdrawn without notice. Available while supplies last. A minimum draw of \$7,500 is required within 90 days of establishing the line and a minimum balance of \$7,500 is required to be outstanding for at least 90 days after the draw to receive the gift.

## Reverse mortgages from Countrywide

For homeowners with high-value homes, a Countrywide SimpleEquity<sup>SM</sup> reverse mortgage can provide:

- Larger loan amount than a traditional reverse mortgage
- No origination fee option available depending on initial loan draw amount
- No mortgage insurance premium
- Lower monthly servicing fees

Call me for your free benefit analysis today.

**Harold Lott**  
Reverse Mortgage, ASM  
(408) 687-0677  
[Harold\\_Lott@Countrywide.com](mailto:Harold_Lott@Countrywide.com)



Reverse mortgages from Countrywide are funded and administered by Countrywide Bank, FSB.

Countrywide Bank, FSB is an Equal Housing Lender. ©2007 Countrywide Financial Corporation. Trade/service marks are the of Countrywide Financial Corporation and/or its subsidiaries. RM50702



## July 3rd Celebration

★★★★★ WITH BIG BAD VODOO DADDY & FIREWORKS!



**Tuesday, July 3, 2007, at 7:30 pm**  
**Frost Amphitheater, Stanford University**  
**Gates open at 5:30 pm**

In what has become a much anticipated summertime tradition, Stanford Lively Arts presents its annual pre-Independence Day concert and fireworks in beautiful Frost Amphitheater, featuring the sizzling sounds of Big Bad Voodoo Daddy. The Grammy-nominated swing band delights with high-energy performances, and powerful horn playing. The evening culminates in a spectacular fireworks display! Bring the family and come early to picnic.

**Tickets: \$44 >> ADULTS**  
**\$22 >> YOUTH (15 & UNDER)**

(The concert will be performed, rain or shine; fireworks dependent upon weather conditions.)

Sponsor: **Media Sponsors:**



**WATCH A VIDEO CLIP AND LISTEN TO MUSIC SAMPLES ONLINE!**  
Order your tickets today! 650-725-ARTS | <http://livelyarts.stanford.edu>

# A new proposal for the Annex

IN EXCHANGE FOR FLOOD BASIN, WATER DISTRICT  
COULD CHIP IN FOR HISTORY MUSEUM

By Daniel DeBolt

For the sake of flood protection, Greg Zlotnick is willing to get creative.

Zlotnick, who is vice president of the Santa Clara Valley Water District, believes it is part of his mission to provide flood protection for the District 5 people he

represents, including those in Mountain View.

To that end, Zlotnick recently made an unusual proposal: The district would build a flood basin at Cuesta Annex in exchange for helping fund a city history museum proposed for the site.

Without the Annex, Zlotnick says, it may not be possible to protect many homes south of El Camino Real along Permanente Creek in the event of a major flood. The Annex flood basin would be part of a set of basins, including others at McKelvey Park and Rancho San Antonio in Los Altos — but those sites can't hold a major flood by themselves, the water district says.

"I'm not sure if folks really understand," Zlotnick said last Monday about the Annex proposal. "If at the end of the day we bring back a proposal and the council says 'no,' well that's their choice to do as long as the community has full information. The consequence of that choice is people are going to get flooded."

Even so, last January the idea faced opposition from the council, which in a 5-2 study session vote asked the water district to study alternatives to Cuesta Annex, particularly building a dam near Hansen-Permanente Quarry in the Los Altos Hills. That idea, however, is unpopular with environmentalists.

Meanwhile, it could take years to raise the estimated \$3.5 million needed to build a museum. Zlotnick, a Palo Alto native who lives in Mountain View, said the water district could help seek grant funding for the project if the Annex basin was allowed.

With the district's help, "There is more of a likelihood it would at least happen sooner," he said. "We bring resources to the table the city may not have."

The flood basin plan would require that the northern third of the Annex, and an equal-sized portion of Cuesta Park, be 15 feet lower than the surrounding area. The area would still be accessible and usable as a meadow, Zlotnick said, and the proposed heritage orchard could be moved to a southern part of the Annex.

With the Annex and other basins in play, the district could protect as many as 2,600 parcels along Permanente Creek from flooding in the case of the so-called "100 year flood," Zlotnick said.

As for the Mountain View History Association, which is leading the push for a museum somewhere in the city, group president Bob Weaver gets a little nervous at Zlotnick's idea. Some residents have objected to the idea of putting the museum at the Annex at all, he says, and linking the project to another seemingly unpopular project could be detrimental.

Although "it's not for us to say what should go or not go there," Weaver said, the offer is not something the History Association is "inclined to embrace."

"The Annex has always been a very sensitive area," he said. "As much as I would like to take the money ... that concept of that flood basin ... is just not politically feasible."

So far, City Council members seem to agree. Nick Galiotto is one of several who don't seem ready to act on the flood basin idea just yet.

"At a previous study session, council members had serious concerns regarding a detention basin at Cuesta Park Annex," Galiotto said in an e-mail last week. "So, in my opinion, it would be premature to attempt to tie the use of the Annex as a detention basin to potential funding of a heritage museum on the site. The council will have to study the feasibility of detention basins at the city sites as a separate matter."

The district says the best alternative to an Annex flood basin is the dam at Hansen-Permanente Quarry. However, the dam would drive the project over budget, Zlotnick said. And Mondy Lariz, chair of the local water committee for the Sierra Club, said it would cut into habitat of the endangered red-legged frog and prevent trout from spawning upstream.

Lariz said the Annex flood basin, on the other hand, could help restore Permanente Creek's natural floodplain. ▀

E-mail Daniel DeBolt at [ddebolt@mv-voice.com](mailto:ddebolt@mv-voice.com)



This image by the Valley Water District shows the proposed Annex flood basin, circled in red.

COURTESY IMAGE



**30% off**  
new customers only  
expires 12/1/07

**Tuscany Hair Design**  
**Grand Opening**

1350 Grant Rd. Suite 10B, Mt. View Near Nob Hill Foods

**We specialize in:**  
Color correction • Highlights • Perms • Cutting curly hair & design cut

**Other Services:**  
Skin care • Waxing • Threading • Bridal Packages (updo & makeup)

**www.tuscanyhairdesign.com • Call 650-969-7070**

Walk ins Welcome

### Preparing for Baby

THURSDAY, JULY 19, 6:30-8:30 P.M. FEE: \$25

Class covers top five dangers to children. Car-seats and basic safety devices will be shown and discussed.

### Sibling Preparation

SATURDAY, JULY 14, 9:30 A.M. (AGES 3-5) OR 11 A.M. (AGES 6 AND UP). FEE: \$25 FIRST CHILD, \$10 ADDITIONAL CHILD/SAME FAMILY

Class designed to include "expectant siblings" in preparation for a new baby.

### Family First Aid

MONDAY, JULY 9, 6-9 P.M. FEE: \$45

This is a MEDIC First Aid program using a lecture, demonstration format. CPR is not included.

### Mind-Body Stress Management

MONDAYS, BEGINS JULY 16, 7-9 P.M. FEE: \$140

Three-week session on mindful breathing and stretching to balance work, family and life issues.



**Camino Medical Group**  
Palo Alto Medical Foundation  
With You. For Life.

*Be Well. Be Well Informed.*

For information on complete class listings and to register, visit: [caminomedical.org](http://caminomedical.org) or call Health Education at 650-934-7373.



## Larry's Knows...

Brought to you by  
Larry & Laurie Moore

THE VOICE  
best of  
MOUNTAIN VIEW  
2006

### TAKING SOME HARD KNOCKS

The metallic rattling noise known as "knocking" that occurs in the engine under certain driving conditions is due to an abnormal form of combustion. If this problem is not corrected, it can lead to engine damage. In some cases, engine knock can be avoided by moving up to a gasoline with the next highest octane rating. Many engines experience an increased appetite for octane as they age, and a jump from 87 octane to 89 octane should not be viewed as too unusual as a vehicle ages. However, a jump in octane requirement from 87 to 92 is unacceptable and indicates an abnormal condition. In some cases, a check of the car's exhaust gas recirculation system will point out the solution.

At Larry's AutoWorks, we are dedicated to your satisfac-

tion. Whenever you have an issue with your vehicle, regardless of its complexity, we hope you depend on us. If you think that you may require an automotive expert come to 101 Freeway on Leghorn between San Antonio and Rengstoff in Mountain View. Take the Rengstoff exit south, then right on Leghorn. Every car our customers bring to us for service has a technician who is factory, qualified and trained on that vehicle. Keep that in mind.

HINT: "Knock" is an unwanted explosion of the air/fuel mixture in the combustion chamber caused by excess heat compression, advanced timing, or an overly lean mixture.

American • German • Japanese

**650-968-5202**

Award-winning clean, modern facility.  
Over 33 years of doing things right.

LARRY'S  
**AutoWorks**

When you want it right!

2526 Leghorn Street, Mountain View (Near Costco)



[www.autoworks.com](http://www.autoworks.com)

### STAFF

#### Publisher

Tom Gibboney

#### Managing Editor

Don Frances

#### Staff Writers

Daniel DeBolt

Alexa Tondreau

#### Intern

Melody Dye

#### Contributors

Angela Hey

Sheila Himmel

Forrest Linebarger

Elaine Rowland

#### Photographers

Norbert von der Groeben

Marjan Sadoughi

#### Design Director

Raul Perez

#### Designers

Linda Atilan

Nancy Hwang

Eric Kinnaird

Joanne Lee

Gail Thoreson

#### Advertising Manager

Britt Callaway

#### Advertising Representative

Marc Manca

#### Real Estate Advertising Executive

Pooja Bhardwaj

#### Real Estate Advertising Coordinator

Charito Mabutias

#### Advertising Services

Bill Rayburn

#### Classified Representatives

Irene Schwartz

Evie Marquez

#### Office Coordinator

Diane Martin

#### Circulation Director

Bob Lampkin

#### HOW TO REACH THE VOICE

655 W. Evelyn Ave., Suite #3

P.O. Box 405

Mountain View, CA 94042

#### News/editorial department

(650) 964-6300

fax (650) 964-0294

#### Display Advertising sales

(650) 964-6300

#### Classified Advertising sales

(650) 964-6490

(650) 326-8216

fax (650) 326-0155

#### E-mail Editorial

editor@MV-VOICE.com

#### E-mail Classified

ads@MV-VOICE.com

#### E-mail Circulation

circulation@MV-VOICE.com

The Voice is published weekly by Embarcadero Publishing Co. and distributed by U.S. Mail to residences and businesses in Mountain View.

Copyright ©2006 by Embarcadero Publishing Company. All rights reserved.

Member, Mountain View Chamber of Commerce

The Mountain View Voice is mailed free upon request to residents in Mountain View. If you are not currently receiving the paper, you may request free delivery by calling 964-6300. Voluntary subscriptions at \$30 per year, \$50 per 2 years, are welcome from residents of Mountain View. Subscription rate for businesses and for residents of other communities is \$50 per year, \$80 per 2 years.

### EDITORIAL THE OPINION OF THE VOICE

## Missing piece to school boundary puzzle

In a 3-2 vote last week, the board of trustees of the Los Altos School District adopted a boundary change, known as "Scenario 2.3," that will shift some 200 Mountain View students from their current elementary schools to new locations.

The change was necessary to help relieve overcrowding in the northern part of the district. It also ignores a big elephant in the room: A great deal of district money is going to rebuilding a school in its most sparsely populated area — Bullis-Purissima, in Los Altos Hills — with little left over, apparently, for the overcrowded schools north of El Camino Real.

Throughout the lengthy board discussions, which went on for months, few parents and educators made this point. This may be because the recent fight over Bullis, which pitted Hills residents against the district for well over a year, was so bitter and divisive that no one wanted to revisit the issue. The fight was resolved only after the district promised to rebuild and reopen Bullis, at a cost of \$12 million, by 2009.

Nonetheless, during the boundary debate many parents and educators did point to a solution that would be fair for all LASD families — namely, opening a third elementary school north of El Camino to relieve the burgeoning student population there.

To this end, some parents living in the Crossings neighborhood proposed taking the Egan Camp site — located at Egan Junior High School — and rebuilding it as another elementary school or, possibly, a sixth-grade-only site.

This solution was deemed a pipedream by many, including board member Margot Harrigan, who said at last week's meeting that using Egan for that purpose would be inappropriate, adding that the funds weren't available to purchase a new site.

Meanwhile, plans for the Bullis remodel continue full steam ahead, despite the fact that educators weren't even sure how they would fill the classrooms until Scenario 2.3 passed. (Last week's boundary change will shift 25 students from Santa Rita Elementary over to Bullis.)

Bullis was reopened after Hills parents complained that they had to drive out of their neighborhood to take their children to school. Loud and clear, they demanded a neighborhood school, and they got one.

Now the district seems to have put itself in a bind. With money tied up in one of the least populated (and highest tax-paying) regions on the Peninsula, the district's resources are at cross purposes with its goal to serve all of its students, and their families, equally. It's a tricky imbalance although Los Altos Hills has fewer students, its residents pay more in property taxes — but one which must be addressed openly.

The fact remains that, in the northern part of the district, there are too many students and not enough schools. Go to the Hills, however, and you'll find a \$12 million school that can barely fill its classrooms.

### LETTERS VOICES FROM THE COMMUNITY

#### SEVERAL PROBLEMS WITH SCENARIO 2.3

Editor:

On Monday, June 18, almost literally at the midnight hour, the Los Altos School District Board of Directors reached a narrow 3-2 decision as to which of the many K-6 area attendance plans to adopt. It is hard for me to understand how the board allowed itself to select the plan that it did, Scenario 2.3, as it:

1) Fails the demographic consultant's own high-growth "stress test" at one school (Santa Rita), and comes close to failing at another (Almond). Making these two schools safe for the future was one of the initial reasons for starting the whole boundary adjustment process in the first place.

2) Affects significantly more children district-wide than any other serious scenario on the table.

3) Causes disruption at five of the six current LASD elementary schools (all but Oak have students moving in and/or out) when the minimum set was three.

4) Fails to provide a path for allowing a school to eventually be opened in the north of the district, where population growth demands it.

5) Uses up the district's remaining bond-derived capital funds to open a new school, in the lowest growth portion of the district, and thereby commits the district to future increased operating expenses even as it faces a projected operational budget shortfall for the next several years.

Given the above facts, how can it be said that the board members voting for Scenario 2.3 acted in the best interest of all the neighborhoods, students, schools and taxpayers?

Eric Flint  
Lloyd Way

#### SCHOOL BOARD SHOULD STUDY ITS OWN HISTORY

Editor:

The recent school boundary decision concluded months of meetings. All these months, the board members never once ranked their priorities, which enabled them to change their minds up to the last minute.

These are supposed to be our trusted representatives, in charge of our children's future? I think they have let us down in many ways. For one, this decision will send students who

▶ See LETTERS, page 16



# Some choice words for the LASD board

By Serge Bonte

We have this routine in our household to have a word of the day, which we study and then use during the day to enrich my third grader son's vocabulary. I want to thank the Los Altos

School District board members for providing us with today's word of the day: Kafkaesque.

That's the only word that came to mind when my son asked me how the last board meeting went (as he knew, it would possibly have an impact on his current attendance at Almond School).

How else to describe a process that results in moving over 400 children away from their current neighborhood school, while providing 140 children in Los Altos Hills with their own neighborhood school — at a cost of \$12 million? All of that, while not even being certain they will all

attend, in the face of a looming district budget shortfall within two years, and while leaving unresolved the litigious rift with Bullis Charter School and its desire to move back to the Bullis site.

In true Kafkaesque form, the more you look at the decision the more Kafkaesque it appears:

Not only will my son be moved from Almond (0.4 miles away that he happily walks/scoots/bikes to every day) to Springer (that he will not-so-happily be driven to every day through already congested traffic), but then he'll be sent further away to Blach and then quite possibly to Mountain View High.

The latter is almost as far as the LASD can go from our house, while Los Altos High is a mere 0.7 miles away on the same path as Almond. Displacing my son and forcing him into a car for two years (fifth and sixth grades) was apparently not disruptive enough for this board.

Come to think of it, the board provided us with quite a few other words of the day: Contempt (only one of the board members even spoke on our neighborhood's behalf during the two hours of debate), Bias (arguments against displacement were used for some neighborhoods, yet not applied to others such as ours), Opacity (as seen in this board members' faces when told repeatedly by Bullis Charter School parents that the only thing standing between BCS and the Bullis site was ... this board).

Hopefully, this will also provide our son with a good civics lesson come Election Day, when this board faces its constituents.

*Serge Bonte lives on Lloyd Way and is a Hollingsworth-Gilmore (H2G) resident.*

## LETTERS

► Continued from page 15

live a half-mile from their current school to another school farther away — but even worse, we never learned exactly why. The final scenario seemed to be chosen in a panic.

Our school board should learn from its history of shortsightedness. Schools are opened and closed, boundaries are changed one year and changed back the next. Yet each time it's as if it never happened before.

When children are moved three times in seven years, there's no excuse. With this kind of history, it should have been the board's mandate to minimize disruption, yet they have refused to learn from history. Our district is much, much poorer for that.

Anne Friedman  
Todd Street

*The Vineyard*

## Small Buildings for Sale

Convenient Mountain View Location

Prices Range From \$425,000 to \$1,149,000

A TYPICAL OFFICE SUITE  
475 Whisman, Suite 300

- 1251 SQUARE FEET
- LOBBY & CONFERENCE ROOM
- 2 PVT OFFICES 1 CONFERENCE RM
- SPACE FOR 3 WORKSTATIONS
- KITCHENETTE W/SINK & FRIDGE
- BREAK AREA & BATHROOM
- CARPETING AND DROPPED CEILING
- FULLY AIR CONDITIONED

**\$512,374** AS SHOWN

(Furniture, work stations,  
office equipment not included)

Design Your Own Space Plan!



CONCEPTUAL SPACE PLAN

- An Exclusive Community for Business and Professionals
- 425-495 Whisman Road (near Ellis St. off ramp from hwy 101)
- 1118-8000+ square feet
- 90% financing available

**C&C**  
CORNISH  
& CAREY  
COMMERCIAL  
ONCOR INTERNATIONAL

[www.TheVineyardMV.com](http://www.TheVineyardMV.com)

**ONLY 9 UNITS LEFT!**

Contact Exclusive Agents  
KEVIN CUNNINGHAM 650.688.8521  
kcunningham@ccarey.com  
RICK BELL 408.982.8428  
rbell@ccarey.com

- RESTAURANT REVIEW
- MOVIE TIMES
- BEST BETS FOR ENTERTAINMENT

■ RESTAURANT REVIEW

## Fusion unraveled

3TA THINKS DIFFERENT —  
SOMETIMES A LITTLE TOO DIFFERENT

By Sheila Himmel

First, the name question: 3ta is pronounced “three-ta” like cheetah. There are three owners, and the restaurant was inspired by a Thai woman whose name is spelled Threeta in English.

In this and other ways, the owners of this 6-month-old culinary hodge-podge are complicating their lives. Running a restaurant is hard enough already.

The Pimsakul family has long run Amarin Thai, on a solid food-court block of Mountain

View’s Castro Street. At Amarin their son, Matt Pimsakul, became a very popular bartender and wanted to try something different. They gutted the space between the El Grullense taqueria and Pasta? and brought in an architect from Thailand to create a very cool space that skews to a younger crowd. Around the bar, curved terracotta tile and painted cement meet dark wood floors. Happy hour offers \$2 kamikazes and \$5 garlic fries.

Matt Pimsakul is a friendly guy. You can see why people

► See 3TA, page 18



MARJAN SADOUGH

3ta restaurant manager Matt Pimsakul, right, adds the last touch to the Castro Cosmo, as Kristina Chapman, left, prepares a drink for a customer in the bar area of 3ta.

## Two Complete Meals

Terrific Tasting Teriyaki

Each meal includes your choice of Beef, Pork or Chicken Teriyaki (#1-4), Rice, Chicken Salad & A Regular Soft Drink.

Only **\$8.95** Plus Tax

## Happi House

T E R I Y A K I

Mountain View • San Jose • Fremont • Milpitas • 408-244-0665  
Limit one coupon per customer. Expires 7/21/07. No Internet Coupons Mountain View.

**AMICI'S**  
EAST COAST PIZZERIA

GREAT PASTAS • FRESH SALADS

**FREE DELIVERY**  
(with min. order)

★ THE VOICE  
best of  
MOUNTAIN VIEW  
2006

★ THE VOICE  
best of  
MOUNTAIN VIEW  
2007

★ THE VOICE  
best of  
MOUNTAIN VIEW  
2004

★ THE VOICE  
best of  
MOUNTAIN VIEW  
2005

★ THE VOICE  
best of  
MOUNTAIN VIEW  
2002

★ THE VOICE  
best of  
MOUNTAIN VIEW  
2003

**THE BEST PIZZA WEST OF NEW YORK**  
—Ralph Barbieri KNBR 680

**790 Castro Street  
Mountain View**  
(1 block from El Camino)

**(650) 961-6666**

# 3TA

**URBAN. HIP.**

New Wave Fusion Restaurant & Bar

AMARIN  
Thai Cuisine

**Lunch:**  
Mon-Fri 11:30 a.m. - 2 p.m.  
Sat-Sun Special Event  
(By Reservation Only)

**Dinner:**  
Mon-Fri 5:30 p.m. - 10 p.m.  
Sat 4:30 p.m. - 10 p.m.  
Sun Special event  
(By Reservation Only)

**Special Event:  
Afternoon Tea Party:**  
2:00 p.m. - 5p.m.  
(Any Day by Reservation Only)

**Catering**

3TA

Restaurant-Lounge-Bar

**Mountain View | 156 Castro St.**  
**650.988.1382**  
(one block from Central Expwy)

★ THE VOICE  
best of  
MOUNTAIN VIEW

“The Best New Restaurant” 2007

## Le Petit Bistro

## Wild Salmon

Baked in an almond crust.  
Served with a fresh vegetable.

# \$21.95

FREE Chocolate Mousse  
with mention of this ad

**Dinner 5:30-9:30pm**

1405 W. El Camino Real  
Mountain View, CA 94040  
Ph: 650-964-3321 Fax: 650-964-5931  
www.lepetitbistro.biz for cuisine to go

JUNE 29, 2007 ■ MOUNTAIN VIEW VOICE ■ 17

# TIED HOUSE CAFE & BREWERY

South Bay's  
Original  
Microbrewery



Your Place for:  
Garden Patio Dining  
Eight Microbrews  
on Tap  
Fresh Beer To Go  
Corporate Parties  
Catering

**Happy Hour:**

Mon-Fri 4pm-6pm  
Saturdays-  
9pm - close

**Voted**

**"Best California Cuisine"**  
in Mountain View

Check out our menu online @  
[www.tiedhouse.com](http://www.tiedhouse.com)

Watch the games on our 4 Hi-Def TVs  
including our 120" Big Screen!

**Open Daily:** M-Th & Sat 11:30-10:00,  
F 11:30-11:00 & Sun 11:30-9:30  
(650) 965-BREW 954 Villa St. Mountain View

# CLARKES

SINCE 1945  
CHARCOAL BROILER

Voted "Best Burger"  
for 14 years  
in a row

as reported in the Mtn. View Voice



**Daily  
Lunch  
Specials**

11am to 2pm  
Mon-Fri

**Breakfast on Weekends**  
Open 7 days for  
Lunch & Dinner

Mountain View • 615 W. El Camino Real  
(650) 967-0851

# MountainView VOICE

Dinner and a movie?  
Check out the  
Weekend Section.

# Weekend



MARJAN SADOUGHI

A crab cake served with Nathanson's Creek chardonnay wine at 3ta restaurant in downtown Mountain View.

## 3TA

► Continued from page 17

want to be around him. I entered 3ta one weekday at noon, and although there were tables set, it wasn't entirely clear whether this was a restaurant or just a bar. He immediately greeted me and told me to sit anywhere. When I chose a table for four for my party of just two he joked, "Fine, but you have to eat for four."

The servers and the soft-shell crabs are beautiful. But overall ser-

vice and food are so inconsistent that it may feel like a whole new crew took over between courses.

The menu says French-Thai cuisine, which would be complicated enough without the stylings of India (roti, samosa), Japan (wasabi, tempura), China (hot and sour soup) and California (portobella mushroom steak). Elsewhere it is called Asian fusion. Many dishes have asterisks next to their names, but you have to ask what that means. It means the dish is spicy.

► Continued on next page

# dining on the town

## afghan

**Afghan/Persian Kabobs**  
604 S. Mary Avenue  
(at El Camino Real)  
Sunnyvale 408/733-5262  
Charbroiled Kabob  
Lunch Special \$7.95  
[www.pakabob.com](http://www.pakabob.com)

## american

**Clarks Charcoal Broiler**  
615 W. El Camino Real,  
Mtn. View. 650/967-0851  
Voted Best Hamburger 14 Yrs  
in a Row. Beautiful Outside  
Patio Dining.

**Hobee's Restaurants**  
2312 Central Expwy.  
Mtn. View. 650/968-6050  
Voted Best Breakfast/Brunch  
9 years in a row!

**Marie Callendar's**  
4710 El Camino Real  
(just south of San Antonio)  
650/941-6989

**Sports Page**  
1431 Plymouth Street  
(exit at Shoreline off 101)  
Mtn. View. 650/961-1992

**Grand Opening**

**W.G. Grinders**  
142 Castro Street  
Mtn. View. 650/390-9388  
Sandwiches, pastas,  
pizzas, salads and desserts

## chinese

**Chef Chu's**  
1067 N. San Antonio Road,  
on the corner of El Camino, Los  
Altos. 650/948-2696  
Zagat Review: "Gold Standard in Fresh  
Chinese Cuisine."

**New Tung Kee Noodle House**  
520 Showers Drive,  
Mtn. View. 650/947-8888  
(Inside San Antonio Center)  
Voted Best Noodle House in  
2003/2004 Mountain View Voice.

## french

**Chez TJ**  
938 Villa Street,  
Mtn. View. 650/964-7466  
"Outrageously good" New French-  
American fare "in a charming little  
Victorian house" - Zagat 2003.

**Le Petit Bistro**  
1405 W. El Camino Real,  
Mtn. View. 650/964-3321  
Casual and cozy French  
restaurant. 15 tables.

## mexican

**Fiesta Del Mar- Seafood,  
Mexican Cuisine & Cantina**  
1005 N. Shoreline Blvd.,  
Mtn. View. 650/965-9354  
Open Daily, Lunch & Dinner.  
Voted Best Seafood for 7 years.



## mexican

**Fiesta Del Mar Too  
Rotisserie & Cantina**  
735 Villa St., Mtn. View  
650/967-3525  
Fresh Lime Margaritas,  
200+ Tequilas,  
Open Late.

**La Fiesta Restaurant**  
240 Villa St., Mtn. View  
650/968-1364  
The best Mole Poblano and  
Margaritas in town.

## pizza

**Kapp's Pizza Bar & Grill**  
191 Castro Street  
Mtn. View, 650/961-1491  
Happy Hours Mon-Fri 4pm-6pm.

## tex-mex

**El Paso Cafe**  
1407 El Camino Real,  
Mtn. View. 650/961-8858  
Fax: 650/961-3439  
(Between Rengstorff and Shoreline)

## ice cream

**Gelato Classico**  
241 B Castro Street  
Mtn. View. 650/969-2900



If you would like to be listed in DINING ON THE TOWN please call Britt Callaway at the Voice at 964-6300

# BMW • MERCEDES • VOLVO AND MINI

## CORPORATE AUTO WORKS

Top Rating For Quality By Bay Area  
Consumer Check Book

**Complete Service and Repair**

770 Yuba, Mt. View  
off El Camino  
near Hwy 85

Mon-Fri 8-6

[www.corporateautoworks.com](http://www.corporateautoworks.com)



Since  
1981

**650-691-9477**

Distributor JT Design Products



► Continued from previous page

Green papaya salad (\$10) is full of crisp juliennes of carrots and green papaya, just-blanching green beans, peanuts and pretty red things that are either cherry tomatoes or chilies. Be careful.

The juliennes mix shows up as a sidekick, with mild dressing, on the smoked duck salad (\$12) that also is marked as spicy but isn't. A generous number of tenderloins, in rich coconut milk sauce, were served very rare. The server should have asked if that's what we wanted.

But 3ta servers appear to be more comfortable as cocktail waitresses, one posted on a stool at the entrance. They aren't very familiar with the menu or with a diner's need for utensils. They address diners as "you guys" and say "no problem" when a simple "thank you" would do.

A lovely appetizer of tempura fried soft-shell crab and asparagus (\$12) was followed by honey-glazed baby back ribs (\$14) that tasted at least twice reheated. Accompanying the tempura were a luscious dipping sauce and mango salsa, beautifully encircled by whisper-thin cucumber slices, two types of basil, and stylish dribbles of two

other bright sauces.

But four large seared scallops (\$20) were barely browned, tasteless, and done no favors by gooey mashed potatoes.

Garlic and ginger fried rice is \$5. Coconut rice, jasmine and brown rice are \$2. Why? You could ask, but in my experience the server won't know and may say she'll find out but doesn't.

On the plus side, portions are generous. Lunch entrees with soup and ample side dishes run \$9 to \$12. Also, 3ta makes a huge outreach statement to vegetarians, offering 14 meatless main dishes, nine starters, and the promise to make any other dish with tofu.

A small but welcome detail: Tap water is served ice cold, but without ice.

The restaurant is a comfortable size, seating about 65 diners, with 28 seats outside, under shade. The 3ta tables are off the curb, on the street, separated from the taqueria's tables by a fragrant row of rosemary bushes. It is not immediately clear which tables belong to neighboring Pasta? and El Grullense, causing another complication 3ta doesn't need. Many people plant themselves in the wrong patch, and must be uprooted. ▣

Sports Page

Watch Every Broadcast Game on New High Definition TVs!

Giants, A's

♦♦♦

Big Screens

DANCE FLOOR

♦♦♦

Full Bar & Menu

♦♦♦

Healthy Menu Specials

♦♦♦

Breakfast Served

♦♦♦

Lunch served all day

Kitchen Open until 8:30pm

1431 Plymouth St., Mtn. View

(Exit at Shoreline off 101)

650.961.1992

Only Bar on Shoreline Blvd.

Fiesta Del Mar

Gourmet Mexican Cuisine

Open 7 Days • Lunch & Dinner • Open Late • Food To Go



THE VOICE best of MOUNTAIN VIEW 2006 9 Years in a Row

Fiesta Del Mar  
1005 N Shoreline Blvd  
Mountain View  
(1 Blk So. of Hwy 101, near  
Movie & Amph Theatres)

(650) 965-9354

Fiesta Del Mar Too  
735 Villa Street  
Mountain View

(Downtown, between Castro & Hope)

(650) 967-3525



"Most Excellent Italian Restaurant in Silicon Valley"  
- Silicon Valley Concierge Association

LIVE ENTERTAINMENT

Tues-Thurs: Yelena on Piano  
Fri: 6pm-9:30pm Gypsy Violin with Tibor & Yelena  
Sat: Enjoy Dining with Mike and Sandi performing your favorite selections



ROMANTIC CANDLELIGHT DINING

PREPARED TABLESIDE

- Unique Flambé Entrees
- Spinach & Caesar Salads
- Cherries Jubilee

SERVING LUNCH & DINNER  
HAPPY HOUR 4-7PM

Tel: 408.734.5323

1228 Reamwood Ave., Sunnyvale

Off Tasman between Lawrence Expwy & Great America Pkwy

DINING NOTES

**3TA**  
156 Castro Street, Mountain View  
(650) 988-1382

**Hours:**  
**Lunch:** Monday - Friday  
11:30 a.m.-2:30 p.m.  
**Dinner:** Monday - Friday  
5:30 - 10 p.m., Saturday  
4:30 - 10 p.m.

- Reservations ✓
- Credit Cards ✓
- Alcohol ✓
- Takeout ✓
- Highchairs ✓
- Wheelchair Access ●
- Banquet ✓
- Catering ✓
- Outdoor Seating ✓
- Parking street & lot
- Noise Level high
- Bathroom Cleanliness excellent

Lunch

Mon-Fri

@ 11am

Dinner

7 Nights

@ 5pm

Aldo Los Altos

eat small ... live large!

388 Main Street, Los Altos (650) 949-2300

"This isn't your daddy's spaghetti joint"



DONATE YOUR CAR FOR THE CLIMATE

(866) 41-CARE-4 or (866) 412-2734

www.BuildingABetterTomorrow.org



Good Food,  
Good Friends,  
Good Times



BUY ANY MENU ITEM & GET A SECOND ONE OF EQUAL OR LESSER VALUE FREE.

EXPIRES 7/15/07

619 Escuela Avenue & El Camino, Mountain View  
(650) 968-5089

## Hydrant Flushing

The City of Mountain View will begin limited flushing of hydrants at the end of all City water mains. Flushing is done to ensure those residents served by dead end hydrants continue to receive fresh, clean water.

The City will be conserving water this summer by only flushing water lines with low use.

Flushing will begin the week of June 18th and will continue for four weeks, ending the week of July 16th, or until all dead end hydrants are successfully refreshed.

If you would like more information about the City's flushing program, or have questions or concerns while City personnel are in your neighborhood flushing water main dead ends, please contact the City's Public Services Division at 650-903-6329, or visit our website at [www.mountainview.gov](http://www.mountainview.gov).



CITY OF MOUNTAIN VIEW

# July and Apple Pies



**\$5.99** You Choose!  
Apple, Apple Lite, French Apple,  
or Sour Cream Apple  
plus tin Available July 1st  
(dine-in, additional \$1.00 off) Sale Ends July 31<sup>st</sup>

**FREE Whole Pie**  
Purchase Any Bottle of Wine at Listed Price  
and Take Home a Free Whole Pie  
Fresh fruit pies not included in promotion, whole pies are for take out only.

**Fresh Peach Pie  
Now Available**  
**\$12.99**  
plus tin

**Marie Callender's**  
LOS ALTOS

4710 El Camino Real  
(Just south of San Antonio)

650-941-6989

## Beneath the mask of 'The Elephant Man'

THOUGHT-PROVOKING  
PLAY LINGERS OVER  
DEFORMITIES BOTH  
PHYSICAL AND SPIRITUAL

By Melody Dye

**B**ernard Pomerance's most famous play, the sobering and insistent drama "The Elephant Man," offers little in the way of consolation, and asks far more questions than it answers.

Perhaps rightly so. As clever Mrs. Kendal figures in the second act, "There is no good use to beauty; it does not signify very much."

Like his dry comedienne, Pomerance is less interested in the illusive comforts of beauty than in the disturbing allure of the grotesque. And it is exploration of the human grotesque in its many dimensions, both physical and spiritual, that forms the twisted backbone of his play.

"The Elephant Man" concerns Joseph Merrick, a 19th century sideshow attraction known for his extreme physical deformities. After being abandoned and swindled by a showman on the continent, Merrick found refuge with Dr. Frederick Treves, a physician at London Hospital who made him a permanent home there.

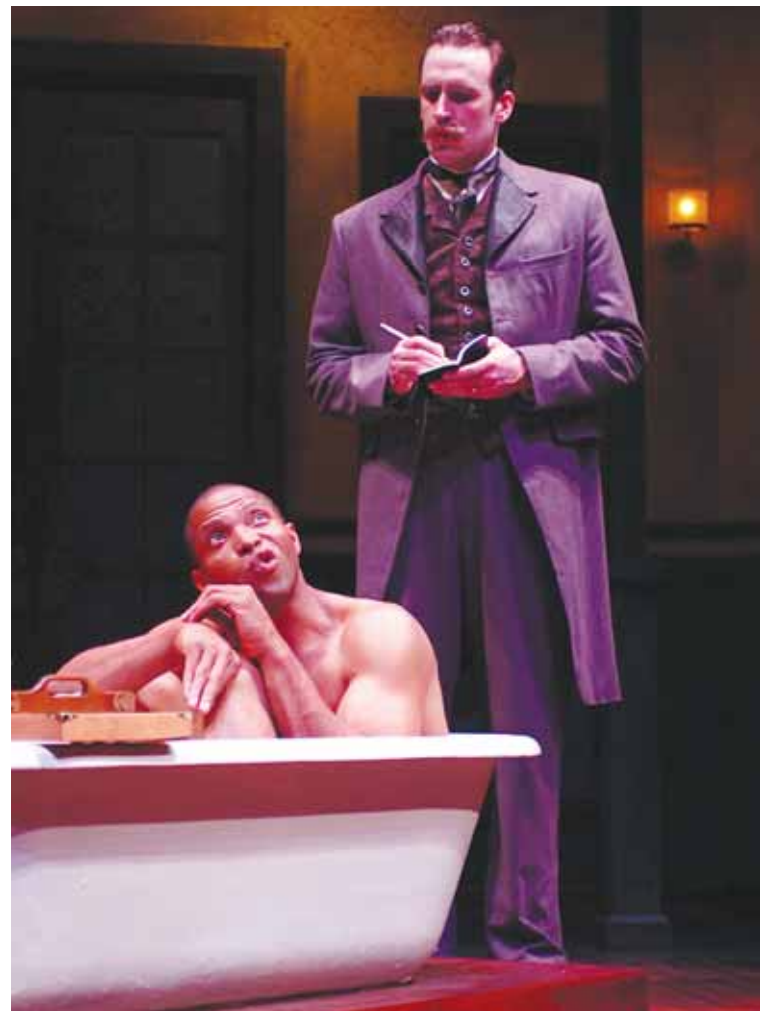
Merrick thrived under these circumstances, attracting the sympathetic attentions of Victorian high society and finding strength in his unwavering Christian faith — but not for long. He died at 27, of asphyxiation, his wind pipe collapsing under the weight of his head as he slept.

Now in a new run with TheatreWorks, the play is a fleshed-out and full-bodied re-imagining of this slice of history. It watchfully lingers over Merrick's mental anguish and his hopes for happiness, probing at his friendship with the troubled Dr. Treves, played by the able and occasionally inspiring Jason Kuykendall, and his lust for the artless, unrestrained Mrs. Kendal, played to droll perfection by the superb Rebecca Dines.

The play takes some from history and much from fiction, swimming between factual accuracy and the kind of speculative indulgence (and occasional fabrication) that make for good theater.

TheatreWorks' Merrick is played, improbably, by the 6-foot-4 Aldo Billingslea, who employs neither makeup nor costume to convey his disfigurement. On stage, the actor contorts his muscular frame into a limping, broken deformation, and knots his pleasing face into a grimace. The cadence of his speech takes on a long, halting quality, as do his movements.

Such efforts are impressive but



DAVID ALLEN

**John Merrick** (Aldo Billingslea) talks with Dr. Treves (Jason Kuykendall) in TheatreWorks' "The Elephant Man," currently showing in downtown Mountain View.

### THEATER REVIEW

leave no illusion; it is impossible to lose sight of Billingslea's sinewy body in performance. As a result, the audience's understanding of the deformity must take shape through the other characters' reaction to it. It's mirrored in masks of pity or disgust, and echoed in sneers.

Surprisingly, this sort of portrayal, developed over many scenes and characters, is subtler, and lets Billingslea resist the sort of physical pantomime that might too easily slip into parody.

Merrick is written as a Romantic, his head full of unlikely, untouchable dreams. In this he is both beautiful and pathetic. Pomerance leaves it unclear what we should make of his unrelenting optimism — if we should be moved or depressed by it — and Billingslea toes the line between the two, making of Merrick something neither pathetic nor perfect, but more richly human.

It is in its deepest reflections that the play hits its stride, laying bare an inescapable distance between man and God that Pomerance refuses to conceal. The soul of the modern man, the play would suggest, is left adrift in a chancy, unpredictable world in which science offers no consolation for

what it reveals. As the thoroughly modern and thoroughly hapless Dr. Treves mutters, "I make no sense of his condition. I make no sense of mine."

On opening night, the production stumbled slightly in its opening scenes, but regained momentum as it pushed forward. While some of the acting is splendid, some is decidedly less so, and the emotional pitch can shift all too abruptly at times.

Still, TheatreWorks' production is always enjoyable, and certainly worthy of the weighty questions it broaches. ▣

### INFORMATION

**What:** Bernard Pomerance's "The Elephant Man," produced by TheatreWorks

**Where:** The Mountain View Center for the Performing Arts, 500 Castro St., Mountain View

**When:** Tuesdays and Wednesdays at 7:30 p.m., Thursdays and Fridays at 8 p.m., Saturdays at 2 and 8 p.m., Sundays at 2 and 7 p.m., through July 15

**Cost:** Tickets are \$20-56, with discounts for youth, students, seniors and members

**Info:** Call (650) 903-6000 or visit [www.theatreworks.org](http://www.theatreworks.org)

MOVIE TIMES

- 1408 (PG-13)** (Not Reviewed)  
 Century 16: 12:30, 3, 5:30, 8:10 & 10:40 p.m.  
 Century 20: 11:20 a.m.; 1:45, 3, 4:25, 5:30, 7, 8:05, 9:35 & 10:35 p.m.
- A MIGHTY HEART (R)** ★★1/2  
 Century 16: 11:15 a.m.; 1:50, 4:25, 7 & 9:40 p.m.  
 Century 20: 11:10 a.m.; 12:15, 1:40, 2:50, 4:40, 5:25, 7:15, 7:55, 9:55 & 10:35 p.m.
- EVAN ALMIGHTY (PG)** ★★  
 Century 16: 11:20 a.m.; 12:10, 1:40, 2:30, 4:05, 5:10, 6:40, 7:35 & 9:25 p.m.  
 Century 12: Noon, 12:40, 1:20, 2, 2:30, 3:10, 3:50, 4:30, 5, 5:40, 6:20, 7, 7:30, 8:10, 8:50, 9:30, 10 & 10:35 p.m.
- EVENING (PG-13)** ★★  
 Century 16: 11:30 a.m.; 2:20, 5, 7:45 & 10:30 p.m.  
 Century 20: 12:10, 1:30, 3:20, 4:40, 6:30, 7:40, 9:40 & 10:30 p.m.
- FANTASTIC FOUR: RISE OF THE SILVER SURFER (PG)** ★★  
 Century 16: 12:55, 3:20, 5:45, 8:05, 8:50 & 10:25 p.m.  
 Century 12: 12:30, 1:40, 2:50, 4, 5:10, 6:40, 7:50, 9 & 10:10 p.m.
- KNOCKED UP (R)** ★★1/2  
 Century 16: 1:10, 4:10, 7:15 & 10:15 p.m.  
 Century 20: 11:40 a.m.; 1:30, 4:30, 5:45, 7:30 & 10:25 p.m.
- LA VIE EN ROSE (PG-13)** ★★  
 Guild: 12:30, 3:30, 6:30 & 9:30 p.m.
- LIVE FREE OR DIE HARD (PG-13)** (Not Reviewed)  
 Century 16: 11:05 a.m.; 12:50, 1:20, 2, 3:55, 4:55, 7:10, 8, 10:15 & 11 p.m.  
 Century 20: 11:05 & 11:35 a.m.; 12:05, 12:35, 1:15, 2, 2:40, 3:10, 3:45, 4:20, 5, 5:35, 6:15, 6:45, 7:20, 8, 8:30, 9:15, 9:45 & 10:20 p.m.
- MR. BROOKS (R)** ★★  
 Century 20: 12:10 p.m.
- THE NAMESAKE (PG-13)** ★★  
 Century 20: 1:25, 4:15, 7:20 & 10:20 p.m.
- NANCY DREW (PG)** ★1/2  
 Century 20: 11:30 a.m.; 1:55, 4:20, 6:55 & 9:20 p.m.
- OCEAN'S THIRTEEN (PG-13)** ★★  
 Century 16: 11 a.m.; 1:50, 4:45, 7:40 & 10:30 p.m.  
 Century 20: 11:10 a.m.; 1:55, 2:55, 4:50, 7:45, 8:50 & 10:30 p.m.
- ONCE (R)** ★★1/2 Aquarius: 1, 3, 5, 7 & 9 p.m.
- PAPRIKA (R)** ★★1/2 Palo Alto Square: 2, 4:45, 7:15 & 9:40 p.m.
- PARIS JE T'AIME (R)** ★★ Aquarius: 1:15, 4, 6:40 & 9:20 p.m.
- PIRATES OF THE CARIBBEAN: AT WORLD'S END (PG-13)** ★★1/2  
 Century 16: 11:10 a.m.; 2:45, 6:20 & 9:55 p.m.  
 Century 12: 11:55 a.m.; 3:40, & 8 p.m.
- RATATOUILLE (G)** (Not Reviewed)  
 Century 16: 11:10 a.m.; 1, 2:15, 4, 5:05, 7:05, 7:50, 9:50 & 10:35 p.m.  
 Century 12: 11:15 & 11:45 a.m.; 12:15, 12:45, 1:25, 2, 2:30, 3, 3:30, 4:10, 4:50, 5:20, 5:50, 6:20, 7, 7:40, 8:10, 8:40, 9:05, 9:50 & 10:30 p.m.
- SHREK THE THIRD (PG)** ★★1/2  
 Century 16: 11:25 a.m.; 4:15 & 8:50 p.m.  
 Century 20: Noon, 2:25, 4:45, 7:10 & 9:40 p.m.
- SICKO (PG-13)** (Not Reviewed)  
 Century 16: 11 a.m.; 12:45, 1:55, 3:45, 4:40, 6:45, 7:30, 9:35 & 10:20 p.m.  
 Century 12: 11:50 a.m.; 1, 3, 4:20, 6:15, 7:20 & 9:20 p.m. Fri. also at 10:20 p.m. Sat. also at 10:25 p.m.
- SPIDER-MAN 3 (PG-13)** ★★1/2  
 Century 20: 10:05 p.m.
- SURF'S UP (PG)** ★★  
 Century 16: 1:45 & 6:35 p.m.  
 Century 12: 11:45 a.m.; 2:20, 4:50, 7:10 & 9:50 p.m.
- WAITRESS (PG-13)** ★★  
 Century 20: 11:20 a.m.; 1:50, 4:35 & 7:25 p.m.  
 Palo Alto Square: 1:45, 4:20, 7 & 9:45 p.m.
- YOU KILL ME (R)** (Not Reviewed)  
 Century 16: 10 p.m.

Note: Screenings are for Friday through Tuesday only.

- AQUARIUS:** 430 Emerson St., Palo Alto (266-9260)  
**CENTURY CINEMA 16:** 1500 N. Shoreline Blvd., Mountain View (960-0970)  
**CENTURY PARK 12:** 557 E. Bayshore Blvd., Redwood City (365-9000)  
**CENTURY 20 DOWNTOWN:** 825 Middlefield Road, Redwood City (369-3456)  
**CINEARTS AT PALO ALTO SQUARE:** 3000 El Camino Real, Palo Alto (493-3456)  
**GUILD:** 949 El Camino Real, Menlo Park (266-9260)  
**SPANGENBERG THEATRE:** 780 Arastradero Road, Palo Alto (354-8263)  
 For show times, plot synopses and more information about any films playing at the Aquarius, Guild and Park, visit [www.LandmarkTheatres.com](http://www.LandmarkTheatres.com)

- ★ Skip it
- ★★ Some redeeming qualities
- ★★★ A good bet
- ★★★★ Outstanding

For show times, plot synopses, trailers and more movie info, visit [www.mv-voice.com](http://www.mv-voice.com) and click on movies.



MOVIE REVIEWS



**A MIGHTY HEART** ★★1/2  
 (Century 16, Century 20) The horror and heartbreak of Daniel Pearl's untimely death is uneasily re-created in this jittery drama based on Mariane Pearl's biographical novel. Pearl (Dan Futterman) was the South Asia bureau chief for the Wall Street Journal in January of 2002; he was at the top of his game when things went badly south. He was living in the third-world environs of Karachi, Pakistan, with wife Mariane (Angelina Jolie), who was a seasoned freelance journalist pregnant with their first child. The initial hours and days of Pearl's disappearance are the focus of "Heart," palpable with dread and the definitive knowledge of a tragic result. It helps to know your Middle East politics, as "Heart" is a labyrinth of corruption and buzz words that resonate with anxiety and afford some narrative confusion. *Rated: R for language violence and very adult themes. 1 hour, 40 minutes.* — J.A.

**EVAN ALMIGHTY** ★★  
 (Century 12, Century 16) "Evan" features the carefree Steve Carell as newly elected Congressman Evan Baxter. Evan is enjoying the wealth and power that goes along with questionable politics. When his wife (Lauren Graham as Joan) confides that she prays for their family to grow closer, Evan follows suit by asking God for the strength to change the world. God (Morgan Freeman) takes Evan's prayer very seriously and visits him in person, telling the confused congressman to build an ark. Soon Evan is shirking his political life to build the ark while God warns of a looming flood. Joan and the couple's three children struggle with the possibility that dad might be nuts, and an underhanded congressman (John Goodman) has greedy plans of his own. The movie comes across as Sunday school meets Greenpeace meets Ace Ventura — laughter, religion and environmentalism make strange bedfellows. *Rated: PG for mild rude humor and some peril. 1 hour, 30 minutes.* — T.H.

**FANTASTIC FOUR: RISE OF THE SILVER SURFER** ★★  
 (Century 12, Century 16) Life has gotten a tad too Hollywood for the Fantastic Four. Despite scientific breakthroughs by the brilliant Reed Richards (Ioan Gruffudd), the buzz around town is centered instead on his upcoming wedding to Sue Storm (Jessica Alba). Meanwhile, Johnny Storm (Chris Evans) lands endorsement deals as the Human Torch and Ben Grimm (Michael Chiklis as The Thing) enjoys a blossoming relationship with girlfriend Alicia (Kerry Washington). Too bad there's a cloud-gliding stranger in the city to toss a cosmic wrench into

► Continued on next page

SUMMER SALE



- Suit
- Shirt
- Tie
- Belt
- Shoes ~~reg. \$1,195~~  
**now: \$499**
- Sport shirt
- Pants
- Belt ~~reg. \$299~~  
**now: \$129**

THE ORIGINAL  
**PETER CASSARA CLOTHIERS**

EST. 1971

842 W. El Camino Real (at Hollenbeck) • Sunnyvale

**408.733.1234**

Mon - Fri 10am - 7pm • Sat 10am - 5pm • Sun by Appt.

[WWW.PETERCASSARACLOTHIERS.COM](http://WWW.PETERCASSARACLOTHIERS.COM)



Low Cost Divorce/Living Trust

DOCUMENT PREPARATION SERVICE



- INCLUDES:**
- Divorce \$449
  - Living Trusts \$399/\$499
  - Incorporations/LLC \$399
  - Non-Profit \$399
  - Probate (Free Quote)
  - And much more!



**We The People® 800-579-0009**

Form and Service Center since 1985. We are not attorneys. We provide only self-help services at your specific discretion. LDA#72 Santa Clara County

**Chile Verde**  
~~\$9.95~~  
**\$5.95**

reg. \$9.75  
 Served with rice, pinto beans, and corn tortillas

Please present coupon  
 Offer Expires 8/15/07 MVV

**Best Margarita Deal in Town!**

House Margarita on the rocks  
~~\$3.00~~  
**\$2.00\***

\*Limit 3 per person, offer good for all adults in party.  
 Offer Expires 8/15/07 MVV  
 Please present coupon



**NEW ITEM GRILLED FISH TACOS!**

**NEW parking lot next to the restaurant**

**FREE BURRITO!**

Buy one Burrito at the regular price and get one Burrito of lesser or equal value\*

from 2PM-6PM

Offer Expires 8/15/07 MVV  
 Chicken & Pork ONLY

**MIKE'S FAVORITE**

House Salad, Fountain Soda, One Chicken Enchilada, and Refried Beans

\*For ~~\$6.95~~ Lunch 11am-6pm

\*For ~~\$8.95~~ Dinner 6pm-9pm

Please present coupon.  
 Offer Expires 8/15/07 MVV

**650-961-8858**

1407 El Camino Real, Mtn. View • Mon-Sat 11am - 9 pm

**EL PASO CAFE RESTAURANT**  
 check us out on the web for menu and directions.  
[www.elpasocafe.com](http://www.elpasocafe.com)



► Continued from previous page

Reed's and Sue's romantic plans. The Silver Surfer (voiced by Laurence Fishburne) zips across the skies like a comet, sparking environmental anomalies and

creating massive craters in the Earth at every turn. With frightened citizens wondering if God's wrath is upon them, the U.S. government enlists the aid of Richards and crew to stop the mysterious Surfer. "Rise" is exactly what a superhero

movie should be: an entertaining, family-friendly popcorn flick with even doses of humor, heroism and heart. *Rated: PG for sequences of action violence, some mild language and innuendo. 1 hour, 29 minutes.* — T.H.

**LA VIE EN ROSE** ★★★ (Guild) Marion Cotillard burns down the house as France's gifted but self-destructive superstar Edith Piaf. Piaf wasn't called "Little Sparrow" for nothing; her lilting voice made the angels weep. But the

psychological damage from a dysfunctional upbringing left scars that would impact the rest of her life. Raised by alcoholic parents and left to her own devices at her grandmother's dreary brothel, a rejected Edith knew plenty of hard times. Ultimately she hoped to leave her harrowing past behind and struck out on her own, singing in the streets for paltry francs. Piaf's star rose astronomically, but not without the whiff of scandal. Cotillard manages to embody all of Piaf's agonizing glory, from her staggering talent to the frivolous martyrdom and stunning flaws. As arresting as Cotillard's performance is, her movie is a tousled biopic both bleak and disturbing, a lengthy bad dream that wrings out every drop of sympathy and sentiment. *Rated: PG-13 for unsettling themes and language. In French with English subtitles. 2 hours, 20 minutes.* — J.A.

**SURF'S UP** ★★★ (Century 12, Century 16) Hollywood's latest attempt to capitalize on penguin appreciation features a forgettable plot, fountains of toilet humor and enough surfing scenarios to make a viewer seasick. Only top-notch animation and some vocal help from talented actors keep "Surf's Up" from completely sinking. The film unfolds as a faux documentary in which reality-TV producers follow young surfer Cody Maverick (Shia LaBeouf) as he strives to compete in the Penguin World Surfing Championship made famous by his idol, Big Z. Cody's passion for surfing is fueled by his admiration for Z, a surfing legend whose apparent death shocked fans and rivals alike. Despite discouraging words from his abusive brother and his own mother's disinterest, Cody's tireless spirit earns him an entry into the heated competition. He finds an unlikely friendship when he meets Geek (Jeff Bridges), a reclusive penguin with an unparalleled knowledge of surfing and making surfboards. Skip this washed-up flick and rent "Finding Nemo" for something with real depth. *Rated: PG for mild language and some rude humor. 1 hour, 25 minutes.* — T.H.



# ENGINEERING SUCCESS.

## EMPLOYEES BEHIND THE SCENES KEEP OUR HOSPITAL HEALTHY.

As a Stationary Engineer, Sam Statham is responsible for keeping things in good working order around the hospital. So while our doctors and nurses work diligently to ensure the health of our patients, Sam does the same for the institution. He carefully checks and rechecks important systems like fire alarms, sprinklers, and electrical wiring to make sure we're always ready to meet the needs of our community. Sam is just one of hundreds of employees who work behind the scenes to help us earn our reputation as a world-class institution. Their contributions are just as important as the doctors and nurses and staff on the front line. And they're a huge part of why we're consistently able to deliver the right care, right here.

*Sam Statham, Stationary Engineer, El Camino Hospital Facilities Team*

**800-216-5556** [www.elcaminohospital.org](http://www.elcaminohospital.org)

 **EL CAMINO HOSPITAL**  
the right care. right here.

### MOVIE CRITICS

S.T.-Susan Tavernetti,  
J.A.-Jeanne Aufmuth, T.H.-Tyler Hanley

### MV: Waiting List Open

#### 1BR Senior Apartments

**SR Fountains Apts**  
2005 San Ramon Ave., Mtn. View  
(650) 966-1060

**Every Tues. 9am-12pm Only**  
**Every Thurs. 1-4pm Only**  
**To Open Permanently**

\*Income limits and monthly rents subject to change with median income of Santa Clara Co. Section 8 Certificates and Vouchers Accepted.

# GoingsOn

MOUNTAIN VIEW VOICE

■ HIGHLIGHT

**MOUNTAIN VIEW SENIOR CENTER 30TH ANNIVERSARY**  
Join Mayor Laura Macias and celebrate 30 years of senior programs within the Mountain View. An address from the Mayor, light refreshments, photographs and memorabilia, and dancing to the tunes of the Magnolia Jazz Band.  
Wed., July 11, 3-5 p.m. Free. Mountain View Senior Center, 266 Escuela Ave., Mountain View. Call 650-903-6330.

## ART GALLERIES

**WATERCOLOR: FACULTY & FRIENDS** The Community School of Music and Arts (CSMA) at Finn Center will present "Watercolor: Faculty & Friends," featuring local artists and faculty members Karen Bieher, Jean Bradshaw, Steve Curl and special guest Bob Currie. Mon.-Sat. through July 25, 9 a.m.-7 p.m. Free. Community School of Music and Arts at Finn Center, 230 San Antonio Circle, Mountain View. Call 650-917-6800, ext. 305. [www.arts4all.org](http://www.arts4all.org)

## BENEFITS

**LET FREEDOM RING** "Let Freedom Ring" festival and benefit concert to support American soldiers stationed in Iraq. Food booths, live music, evening concert, jumpers and petting zoo. Sat., June 30, 3-8 p.m. Free. The Rock Church, 263 Escuela Ave., Mountain View. Call 650-968-7625.

## CLASSES/WORKSHOPS

**SUMMER LINE DANCE LABS IN MOUNTAIN VIEW** Line dance classes based upon dances taught during previous quarters. Deeper exploration of rhythm, variations and choreography. Taught by choreographer Hedy McAdams. July 7-Aug. 3, 9:30-10:30 a.m. Each Series \$30 on-site/\$27 pre-paid; Both Series \$54/\$49, Drop-ins \$15/lab. New Century Dance Studio, 215 Moffet Blvd. Suite B, Mountain View. Call 650-325-3371. [www.DanceAdventures.com](http://www.DanceAdventures.com)

## CLUBS/MEETINGS

**WORKING PARENTS GROUP** The Working Parents Group offers the opportunity to connect with other parents, receive and share practical advice and express frustrations and joys in a relaxed, nonjudgmental environment. July 4-Aug. 29, 7-8:30 p.m. Blossom Birth, 299 S. California Ave., Palo Alto. Call 650-321-2326. [blossombirth.org](http://blossombirth.org)

## COMMUNITY EVENTS

**AIDS KITS FOR AFRICA** Help with AIDS crisis in Africa. Assemble caregivers kits to be distributed in Africa by World Vision. Kits contain important items for both patients and caregivers alike. All are welcome. Donations also accepted. Fri., July 13 & Sat., July 14, Fri. 6-9 p.m.; Sat. 9 a.m.-4 p.m. Peninsula Bible Church, 3505 Middlefield Road, Mountain View. Call 650-494-3840 ext. 237. [www.pbc.org](http://www.pbc.org)

**CREATING GREAT COMMUNITIES** Join us for a workshop on creating great new neighborhoods in the South Bay. The day will include a "Smart Growth Scavenger Hunt." Sat., June 30, 12-4 p.m. Free King of Krung Siam Restaurant, 194 Castro St., Mountain View. Call 415-543-6771.

**KIDS ART ON MAIN STREET** Showcases works by 30 young artists (grades K-6) from CSMA's Arts in Action program. Sponsored by the Los Altos Town Crier and Community School of Music and Arts. July 3-31, Free. Main Street Cafe and Books, 134 Main St., Los Altos. Call 650-917-6800 ext. 305. [www.arts4all.org](http://www.arts4all.org)

**PAN EMERGENCY PREPAREDNESS FAIR**

Visit the emergency preparation faire at the Palo Alto Chili cook-off in Mitchell Park. Spin the prize wheel, sample emergency rations, see what should go in an emergency kit, learn how to prepare for pets, talk to Red Cross & HAM operators and pick up lots of preparedness info. Weds./ July 4, 12-4:30 p.m. Free. Mitchell Park, Palo Alto. Call 650-799-6080.

## CONCERTS

**CITY OF MOUNTAIN VIEW SUMMER SOUNDS** The Bell Brothers perform a blend of country and roots rock. Thu., July 12, 6:30-8 p.m. Free. Cuesta Park, Mountain View. <http://www.mountainview.gov/>

**MARIA MARQUEZ QUINTET** Venezuelan singer Maria Marquez. Formerly of Wild Mango, she has collaborated with John Santos and Omar Sosa. Fri., July 13, 8 p.m. \$14-28. Campbell Recital Hall, Braun Music Center, 541 Lasuen Mall, Stanford. Call 650-736-0324. [www.stanfordjazz.org](http://www.stanfordjazz.org)

**MELODY OF CHINA: YOUNG COMPOSERS SERIES** Melody of China, the Chinese music ensemble, performs new works by up-and-coming Bay Area composers. They present new and traditional music on traditional Chinese instruments. Led by Hong Wang and Yangqin Zhao, the concert features works by: Alan Chan, Eric Myers, Albert Chang and Bik Lee. Sat., July 7, 7:30-9:30 p.m. \$12 students/seniors \$15 general. Community School of Music and Art, Finn Center, 230 San Antonio Circle, Mountain View. Call 415-640-9825. [www.melodyofchina.org](http://www.melodyofchina.org)

## FAMILY AND KIDS

**CAMP ELEPHANT PHARM: MAKE A BOOK BAG (AGES 7-10)** Design a book bag. Canvas book bags will be provided. Tue., July 10, 1-2 p.m. Free. Elephant Pharm, 4470 El Camino Real, Los Altos. Call 415-777-1170. [www.elephantpharmacy.com](http://www.elephantpharmacy.com)

**GUITAR FOR KIDS** Learn to play guitar this summer. Kids ages 6-15 are welcome. Classes will be divided by age and levels. Weekly meetings with flexible summer schedule. Small groups. June 25-July 30, 4:15-5:15 p.m. Monthly \$60 278 Hope Street, Mountain View. Call 650-306-0332.

## ON STAGE

**SPACE IS BLUE (AND THE BIRDS FLY IN IT)** Gregory Meyer's script dwells on the link between scientific truth and human experience, as a self-styled "family" of loners, related by friendship but not by blood, struggles over the fate of a brilliant child. This marks the Pear's 6th world premiere. June 29-July 15, 8 p.m. \$10 - \$25. The Pear Avenue Theatre, 1220 Pear Ave. Unit K, Mountain View. Call 650-254-1148. [www.thepear.org](http://www.thepear.org)

**THEATREWORKS PRESENTS "THE ELEPHANT MAN"** TheatreWorks opens its 38th season with a revival of Tony Award-winning play "The Elephant Man." Robert Kelley directs. Weds., June 20 through Sun. July 15, T-W, 7:30pm, Th-Sat, 8pm; Sun, 2, 7pm. \$20-56 TheatreWorks at the Mountain View Center for the Performing Arts, 500 Castro St., Mountain View. [www.theatreworks.org](http://www.theatreworks.org)

## SENIORS

**ASAP** Mountain View seniors who are interested in attending free performances at the Mountain View Center for Performing Arts but are unable or unwilling to drive at night, can participate in the ASAP program. Volunteer drivers provide transportation to and from designated performances. Call for more info. Free. Mountain View Senior Center, 266 Escuela Ave., Mountain View. Call 650-903-6330.

**WORKSHOP: BASICS OF IN-HOME CARE** Gene, owner of Right at Home, talks about why and how to choose a type of in-home assistance, payment options and what to expect when bringing someone into your home. Thu., July 12, 1-2:30 p.m. Free. Mountain View Senior Center, 266 Escuela Ave., Mountain View. Call 650-903-6330.

## TALKS/AUTHORS

**PRIME TIME LEGAL SERIES SESSION 5** The eight seminars will teach best practices and common pitfalls for new ventures. Thu., July 12, 12-1 p.m. Free. Fenwick & West LLP, 801 California St., Mountain View. Call 415-421-5500. <http://www.wtc-sf.org>

## ■ MORE LISTINGS

For a complete listing of local events, see our website at [www.PaloAltoOnline.com](http://www.PaloAltoOnline.com).

**Watch your money grow**

**Star One Money Market Savings Accounts**

**5.00% APY\***

- Earn more than 6X the National Average
- Insured to at least \$100,000 by NCUA
- Liquid, Immediate Access
- Over 25,000 Surcharge-Free ATMs
- More than 2,000 Shared Branches

**STAR ONE CREDIT UNION**

Toll-Free (866)543-5202 • (408) 543-5202  
Or visit [www.starone.org](http://www.starone.org) for more information

**Coming Soon!**  
Palo Alto  
3903 El Camino Real  
El Camino Real & Ventura Ave.

Sunnyvale: 188 8th Avenue  
Cupertino: 10991 North De Anza Blvd.  
San Jose: 1090 Blossom Hill Rd.  
8th Ave & H Street  
De Anza Blvd. & Homestead Rd.  
Blossom Hill Rd. & Almaden Expressway

**NCUA** Your savings federally insured to at least \$100,000 and backed by the full faith and credit of the United States Government. National Credit Union Administration, a U.S. Government Agency.

\*APY (Annual Percentage Yield) is effective June 1, 2007 and is variable and subject to change. Star One dividend rate and APY may change monthly as determined by the Credit Union Board of Directors. \$50 minimum opening deposit is required to establish the account. You must maintain a \$50 minimum daily balance to earn 5.00% APY. Subject to Truth-in-Savings disclosure and fee schedule. All accounts are subject to Star One credit approval, account opening procedures, and standard account and membership terms and disclosures. Fees may reduce earnings.

# We're hitting homes runs all over town.



## But you're the one that scores.



Monterey Capital is creating homeownership opportunities in some of the South Bay Area's best neighborhoods. Our goal is to develop high quality, affordable communities that are situated near all the things you

demand in a great location and provide you with everything you desire in a home.

*We invite you to tour any of our fine communities soon.*



REAL ESTATE DEVELOPMENT  
**MONTEREY**

*Capital*

for more information visit  
[www.montereycapital.net](http://www.montereycapital.net)

### THREE NEW CONDOMINIUM COMMUNITIES. ONE IS PERFECT FOR YOU!

**ONLY 2 REMAINING!**



**FROM THE UPPER \$600'S**



**MOUNTAIN VIEW**

SPACIOUS 3 BEDROOM, 2.5 BATH CONDOS PLUS DEN AND SUN DECK IN AN SMALL COMMUNITY IN A ULTRA-CONVENIENT SILICON VALLEY LOCATION.

**650-938-2600**

2002 W. Middlefield Road

Open 11AM to 6PM, Thurs. – Monday

**PHASE I 90% SOLD OUT!**



**FROM THE LOW \$300'S**



**SAN JOSE**

1 & 2 BEDROOM HOMES IN ONE OF SAN JOSE'S BEST AND MOST CONVENIENT NEIGHBORHOODS. THE PERFECT BLEND OF STYLE AND AFFORDABILITY!

**408-266-4970**

4970 Cherry Avenue

Open 11AM to 6PM, Thurs. – Monday

**GRAND OPENING!**



**FROM THE UPPER \$300'S**



**SAN JOSE - WILLOW GLEN**

1 & 2 BEDROOM CONDOMINIUMS LOCATED NEAR DOWNTOWN WILLOW GLEN. FENCED YARDS AND LARGE DECKS ADD EXTRA LIVING SPACE!

**408-295-1215**

1205-1215 Bird Avenue

Open 11AM to 6PM, Sat. – Wednesday

Prices, terms, specifications and availability subject to change without notice.

